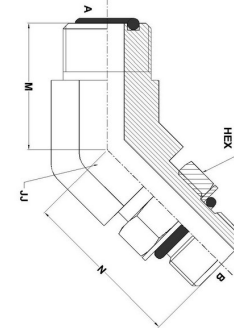
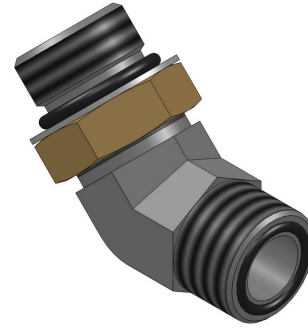




**HYDROMATIK**  
connections par excellence

## O-Ring Face Seal Fittings

**MFS-MAORB 45°** FS6802-NWO Series | SAE# 520320



PART NO.SIZE	TUBE O.D.	A THREAD	B THREAD	A DRILL	B DRILL	M LGTH	N LGTH	C HEX	JJ FLATS
FS6802-04-04-NWO-FG	1/4	9/16-18	7/16-20	0.172	0.172	0.63	1.18	0.625	0.562
FS6802-04-06-NWO-FG	1/4	9/16-18	9/16-18	0.172	0.264	0.68	1.30	0.750	0.750
FS6802-04-08-NWO-FG	1/4	9/16-18	3/4-16	0.172	0.378	0.67	1.43	0.938	0.750
FS6802-06-04-NWO-FG	3/8	11/16-16	7/16-20	0.264	0.172	0.74	1.22	0.625	0.750
FS6802-06-06-NWO-FG	3/8	11/16-16	9/16-18	0.264	0.264	0.74	1.30	0.750	0.750
FS6802-06-08-NWO-FG	3/8	11/16-16	3/4-16	0.264	0.378	0.74	1.43	0.938	0.750
FS6802-06-10-NWO-FG	3/8	11/16-16	7/8-14	0.264	0.484	0.76	1.76	1.062	1.062
FS6802-08-06-NWO-FG	1/2	13/16-16	9/16-18	0.378	0.295	0.80	1.30	0.750	0.750
FS6802-08-08-NWO-FG	1/2	13/16-16	3/4-16	0.378	0.378	0.80	1.43	0.938	0.750
FS6802-08-10-NWO-FG	1/2	13/16-16	7/8-14	0.378	0.484	0.82	1.76	1.062	1.062
FS6802-08-12-NWO-FG	1/2	13/16-16	1-1/16-12	0.378	0.609	0.87	1.97	1.375	1.188
FS6802-10-08-NWO-FG	5/8	1-14	3/4-16	0.484	0.390	0.92	1.59	0.938	1.062
FS6802-10-10-NWO-FG	5/8	1-14	7/8-14	0.484	0.484	0.92	1.76	1.062	1.062
FS6802-10-12-NWO-FG	5/8	1-14	1-1/16-12	0.484	0.609	0.96	1.97	1.375	1.188
FS6802-12-08-NWO-FG	3/4	1-3/16-12	3/4-16	0.609	0.390	1.02	1.64	0.938	1.188

FS6802-12-10-NWO-FG	3/4	1-3/16-12	7/8-14	0.609	0.484	1.02	1.81	1.062	1.188
FS6802-12-12-NWO-FG	3/4	1-3/16-12	1-1/16-12	0.609	0.609	1.02	1.97	1.375	1.188
FS6802-12-16-NWO-FG	3/4	1-3/16-12	1-5/16-12	0.609	0.811	1.16	2.06	1.625	1.438
FS6802-16-12-NWO-FG	1	1-7/16-12	1-1/16-12	0.811	0.609	1.18	2.03	1.375	1.438
FS6802-16-16-NWO-FG	1	1-7/16-12	1-5/16-12	0.811	0.811	1.18	2.06	1.625	1.438
FS6802-16-20-NWO-FG	1	1-7/16-12	1-5/8-12	0.811	1.024	1.26	2.11	1.875	1.625
FS6802-20-16-NWO-FG	1-1/4	1-11/16-12	1-5/16-12	1.024	0.843	1.26	2.11	1.625	1.625
FS6802-20-20-NWO-FG	1-1/4	1-11/16-12	1-5/8-12	1.024	1.024	1.26	2.11	1.875	1.625
FS6802-24-24-NWO-FG	1-1/2	2-12	1-7/8-12	1.260	1.260	1.45	2.11	2.125	1.875