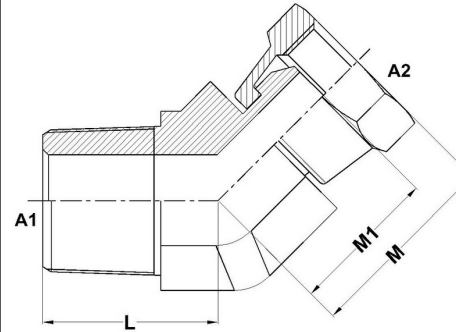
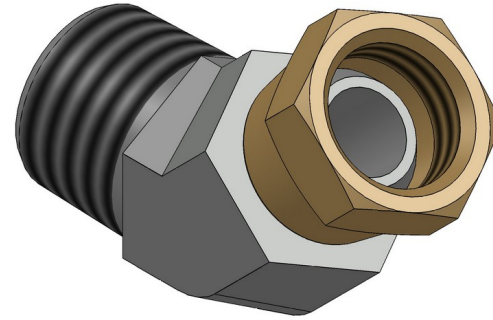




HYDROMATIK
connections par excellence

Tube Fittings & Adapters

MP-FPS 45° 1503 Series | SAE# 140330



PART NO. SIZE	A1 NPTF	A2 NPSM	A1 DRILL	A2 DRILL	L LGTH	M1 LGTH	M LGTH	C HEX	Y FLATS
1503-02-02-FG	1/8-27	1/8-27	0.188	0.150	0.52	0.62	0.76	0.562	0.438
1503-02-04-FG	1/8-27	1/4-18	0.188	0.220	0.67	0.73	0.92	0.688	0.562
1503-04-02-FG	1/4-18	1/8-27	0.281	0.150	0.86	0.62	0.76	0.562	0.562
1503-04-04-FG	1/4-18	1/4-18	0.281	0.220	0.86	0.73	0.92	0.688	0.562
1503-04-06-FG	1/4-18	3/8-18	0.281	0.340	0.95	0.81	1.02	0.875	0.750
1503-04-08-FG	1/4-18	1/2-14	0.281	0.460	0.98	0.88	1.16	1.000	0.875
1503-06-04-FG	3/8-18	1/4-18	0.406	0.220	0.95	0.79	0.98	0.688	0.750
1503-06-06-FG	3/8-18	3/8-18	0.406	0.340	0.95	0.81	1.02	0.875	0.750
1503-06-08-FG	3/8-18	1/2-14	0.406	0.460	0.98	0.88	1.16	1.000	0.875

1503-08-04-FG	1/2-14	1/4-18	0.531	0.220	1.17	0.79	0.98	0.688	0.875
1503-08-06-FG	1/2-14	3/8-18	0.531	0.340	1.17	0.81	1.02	0.875	0.875
1503-08-08-FG	1/2-14	1/2-14	0.531	0.460	1.17	0.88	1.16	1.000	0.875
1503-08-12-FG	1/2-14	3/4-14	0.531	0.635	1.20	1.02	1.37	1.250	1.062
1503-12-06-FG	3/4-14	3/8-18	0.719	0.340	1.20	0.98	1.19	0.875	1.062
1503-12-08-FG	3/4-14	1/2-14	0.719	0.460	1.20	1.02	1.30	1.000	1.062
1503-12-12-FG	3/4-14	3/4-14	0.719	0.635	1.20	1.02	1.37	1.250	1.062
1503-12-16-FG	3/4-14	1-11 1/2	0.719	0.831	1.29	1.15	1.50	1.500	1.312
1503-16-12-FG	1-11 1/2	3/4-14	0.938	0.635	1.48	1.04	1.39	1.250	1.312
1503-16-16-FG	1-11 1/2	1-11 1/2	0.938	0.831	1.48	1.15	1.50	1.500	1.312
1503-16-20-FG	1-11 1/2	1-1/4-11 1/2	0.938	1.087	1.64	1.23	1.65	1.875	1.625
1503-20-16-FG	1-1/4-11 1/2	1-11 1/2	1.250	0.831	1.67	1.20	1.55	1.500	1.625
1503-20-20-FG	1-1/4-11 1/2	1-1/4-11 1/2	1.250	1.087	1.67	1.23	1.65	1.875	1.625
1503-24-24-FG	1-1/2-11 1/2	1-1/2-11 1/2	1.500	1.317	1.77	1.35	1.77	2.125	1.875
1503-32-32-FG	2-11 1/2	2-11 1/2	1.938	1.802	2.11	1.46	1.88	2.625	2.500