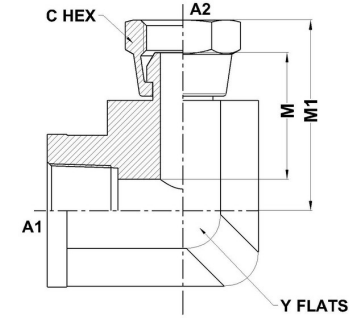
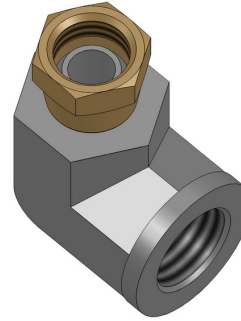




**HYDROMATIK**  
connections par excellence

## Tube Fittings & Adapters

**FP-FPS 90°** 1502 Series | SAE# 140231



| PART NO. SIZE | A1 NPTF | A2 NPSM | A2 DRILL | L LGTH | M LGTH | M1 LGTH | C HEX | Y FLATS |
|---------------|---------|---------|----------|--------|--------|---------|-------|---------|
| 1502-02-02-FG | 1/8-27  | 1/8-27  | 0.150    | 0.66   | 0.80   | 0.94    | 0.562 | 0.562   |
| 1502-02-04-FG | 1/8-27  | 1/4-18  | 0.220    | 0.66   | 0.91   | 1.10    | 0.688 | 0.562   |
| 1502-04-02-FG | 1/4-18  | 1/8-27  | 0.150    | 0.88   | 0.88   | 1.02    | 0.562 | 0.750   |
| 1502-04-04-FG | 1/4-18  | 1/4-18  | 0.220    | 0.88   | 0.99   | 1.18    | 0.688 | 0.750   |
| 1502-04-06-FG | 1/4-18  | 3/8-18  | 0.340    | 0.88   | 1.01   | 1.22    | 0.875 | 0.750   |
| 1502-06-04-FG | 3/8-18  | 1/4-18  | 0.220    | 1.02   | 1.04   | 1.23    | 0.688 | 0.875   |
| 1502-06-06-FG | 3/8-18  | 3/8-18  | 0.340    | 1.02   | 1.06   | 1.27    | 0.875 | 0.875   |
| 1502-06-08-FG | 3/8-18  | 1/2-14  | 0.460    | 1.02   | 1.13   | 1.41    | 1.000 | 0.875   |
| 1502-08-04-FG | 3/4-16  | 1/4-18  | 0.220    | 1.23   | 1.15   | 1.34    | 0.688 | 1.062   |
| 1502-08-06-FG | 1/2-14  | 3/8-18  | 0.340    | 1.23   | 1.17   | 1.38    | 0.875 | 1.062   |
| 1502-08-08-FG | 1/2-14  | 1/2-14  | 0.460    | 1.23   | 1.24   | 1.52    | 1.000 | 1.062   |
| 1502-08-12-FG | 1/2-14  | 3/4-14  | 0.635    | 1.23   | 1.24   | 1.59    | 1.250 | 1.062   |
| 1502-12-08-FG | 3/4-14  | 1/2-14  | 0.460    | 1.36   | 1.47   | 1.75    | 1.000 | 1.312   |
| 1502-12-12-FG | 3/4-14  | 3/4-14  | 0.635    | 1.36   | 1.47   | 1.82    | 1.250 | 1.312   |

|               |              |              |       |      |      |      |       |       |
|---------------|--------------|--------------|-------|------|------|------|-------|-------|
| 1502-12-16-FG | 3/4-14       | 1-11 1/2     | 0.831 | 1.36 | 1.58 | 1.93 | 1.500 | 1.312 |
| 1502-16-12-FG | 1-11 1/2     | 3/4-14       | 0.635 | 1.62 | 1.62 | 1.97 | 1.250 | 1.625 |
| 1502-16-16-FG | 1-11 1/2     | 1-11 1/2     | 0.831 | 1.62 | 1.73 | 2.08 | 1.500 | 1.625 |
| 1502-20-16-FG | 1 1/4-11 1/2 | 1-11 1/2     | 0.831 | 1.70 | 1.80 | 2.15 | 1.500 | 1.875 |
| 1502-20-20-FG | 1 1/4-11 1/2 | 1 1/4-11 1/2 | 1.087 | 1.70 | 1.83 | 2.25 | 1.875 | 1.875 |
| 1502-24-24-FG | 1 1/2-11 1/2 | 1 1/2-11 1/2 | 1.317 | 2.08 | 2.41 | 2.83 | 2.125 | 2.562 |
| 1502-32-32-FG | 2-11 1/2     | 2-11 1/2     | 1.802 | 2.39 | 2.57 | 2.99 | 2.625 | 2.812 |