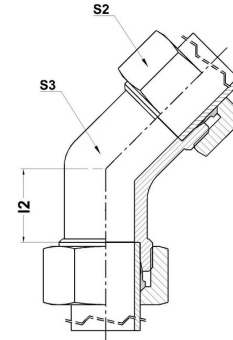
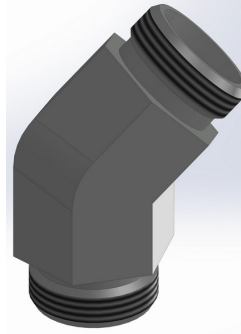




**HYDROMATIK**  
connections par excellence

## Metric Bite Type Fittings

**E 45° - EQUAL ELBOW 45°** E 45° |



Part No.	Series	Tube OD(d)	S2	Y	A
E 12-L 45°	Light-250 Bar	12	22	19	24
E 15-L 45°	Light-250 Bar	15	27	24	28
E 18-L 45°	Light-160 Bar	18	32	27	31
E 22-L 45°	Light-160 Bar	22	36	32	35
E 28-L 45°	Light-100 Bar	28	41	41	38
E 35-L 45°	Light-100 Bar	35	50	46	45
E 42-L 45°	Light-100 Bar	42	60	55	51
E 16-S 45°	Heavy-400 Bar	16	30	27	31
E 20-S 45°	Heavy-400 Bar	20	36	32	35
E 25-S 45°	Heavy-400 Bar	25	46	41	38
E 30-S 45°	Heavy-250 Bar	30	50	46	45
E 38-S 45°	Heavy-250 Bar	38	60	55	51

Dimensions given approx. Fig. with tightened nut.

Part No. Given refers to complete assembly - Steel Part