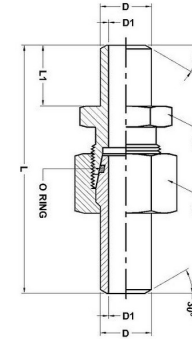
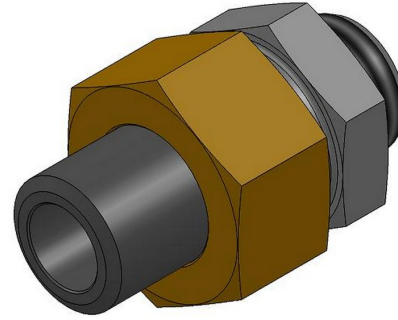




**HYDROMATIK**  
connections par excellence

## Weldable Type Fittings

### ASK - WELD FITTINGS ASK |



| Part No.     | Max. Pressure PB | L    | L1   | D  | D1 | S1 | S2 |
|--------------|------------------|------|------|----|----|----|----|
| ASK 10 X 1.0 | 249              | 57   | 10   | 10 | 8  | 19 | 22 |
| ASK 10 X 1.5 | 358              | 57   | 10   | 10 | 7  | 19 | 22 |
| ASK 10 X 2.0 | 460              | 57   | 10   | 10 | 6  | 19 | 22 |
| ASK 12 X 1.5 | 305              | 62   | 15   | 12 | 9  | 22 | 24 |
| ASK 12 X 2.0 | 393              | 62   | 15   | 12 | 8  | 22 | 24 |
| ASK 12 X 2.5 | 476              | 62   | 15   | 12 | 7  | 22 | 24 |
| ASK 16 X 1.5 | 234              | 71.5 | 16.5 | 16 | 13 | 27 | 30 |
| ASK 16 X 2.0 | 305              | 71.5 | 16.5 | 16 | 12 | 27 | 30 |
| ASK 16 X 2.5 | 372              | 71.5 | 16.5 | 16 | 11 | 27 | 30 |
| ASK 16 X 3.0 | 400              | 71.5 | 16.5 | 16 | 10 | 27 | 30 |
| ASK 20 X 2.0 | 249              | 81   | 19   | 20 | 16 | 32 | 36 |
| ASK 20 X 2.5 | 305              | 81   | 19   | 20 | 15 | 32 | 36 |
| ASK 20 X 3.0 | 358              | 81   | 19   | 20 | 14 | 32 | 36 |
| ASK 20 X 4.0 | 400              | 81   | 19   | 20 | 12 | 32 | 36 |

|              |     |       |      |    |    |    |    |
|--------------|-----|-------|------|----|----|----|----|
| ASK 25 X 3.0 | 294 | 89    | 19.5 | 25 | 19 | 41 | 46 |
| ASK 25 X 4.0 | 379 | 89    | 19.5 | 25 | 17 | 41 | 46 |
| ASK 25 X 5.0 | 400 | 89    | 19.5 | 25 | 15 | 41 | 46 |
| ASK 30 X 3.0 | 249 | 96.5  | 23   | 30 | 24 | 46 | 50 |
| ASK 30 X 4.0 | 323 | 96.5  | 23   | 30 | 22 | 46 | 50 |
| ASK 30 X 5.0 | 393 | 96.5  | 23   | 30 | 20 | 46 | 50 |
| ASK 30 X 6.0 | 400 | 96.5  | 23   | 30 | 18 | 46 | 50 |
| ASK 38 X 4.0 | 261 | 100.5 | 22   | 38 | 30 | 55 | 60 |
| ASK 38 X 5.0 | 315 | 100.5 | 22   | 38 | 28 | 55 | 60 |
| ASK 38 X 6.0 | 315 | 100.5 | 22   | 38 | 26 | 55 | 60 |
| ASK 38 X 7.0 | 315 | 100.5 | 22   | 38 | 24 | 55 | 60 |

Dimensions given approx., fig. with tightened nut

Temp range without pressure reductions

for 'O' Ring sealing of NBR (buna N- Std) -35° to +100° C, FOR FPM

(Viton - ON request) -25° to +120° C.

Shore Hardness Approx. 90