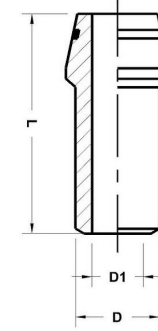




HYDROMATIK
connections par excellence



Weldable Type Fittings

WN - WELDABLE NIPPLE WN |

Part No.	Working Pressure NP of Fitting	Max. Pressure PB for WN & Tube	O Ring	L	D	D1
WN 10 X 1.0	630	249	7.5 X 1.5	32.5	10	8
WN 10 X 1.5	630	358	7.5 X 1.5	32.5	10	7
WN 10 X 2.0	630	460	7.5 X 1.5	32.5	10	6
WN 12 X 1.5	630	305	9 X 1.5	32.5	12	9
WN 12 X 2.0	630	393	9 X 1.5	32.5	12	8
WN 12 X 2.5	630	476	9 X 1.5	32.5	12	7
WN 16 X 1.5	400	234	12 X 2	38.5	16	13
WN 16 X 2.0	400	305	12 X 2	38.5	16	12
WN 16 X 2.5	400	372	12 X 2	38.5	16	11
WN 16 X 3.0	400	435	12 X 2	38.5	16	10
WN 20 X 2.0	400	249	16.3 X 2.4	44.5	20	16

WN 20 X 2.5	400	305	16.3 X 2.4	44.5	20	15
WN 20 X 3.0	400	358	16.3 X 2.4	44.5	20	14
WN 20 X 4.0	400	460	16.3 X 2.4	44.5	20	12
WN 25 X 3.0	400	294	20.3 X 2.4	49.5	25	19
WN 25 X 4.0	400	379	20.3 X 2.4	49.5	25	17
WN 25 X 5.0	400	460	20.3 X 2.4	49.5	25	15
WN 30 X 3.0	400	249	25.3 X 2.4	52	30	24
WN 30 X 4.0	400	323	25.3 X 2.4	52	30	22
WN 30 X 5.0	400	393	25.3 X 2.4	52	30	20
WN 30 X 6.0	400	460	25.3 X 2.4	52	30	18
WN 38 X 4.0	250	261	33.3 X 2.4	56.5	38	30
WN 38 X 5.0	250	319	33.3 X 2.4	56.5	38	28
WN 38 X 6.0	250	375	33.3 X 2.4	56.5	38	26
WN 38 X 7.0	250	429	33.3 X 2.4	56.5	38	24

* For this part the max. Pressure will be limited by NP or PB Pressure of the other fittings.

Dimensions given approx., fig. with tightened nut

Temp range without pressure reductions

for 'O' Ring sealing of NBR (buna N- Std) -35° to +100° C, FOR FPM

(Viton - ON request) -25° to +120° C.

Shore Hardness Approx. 90