

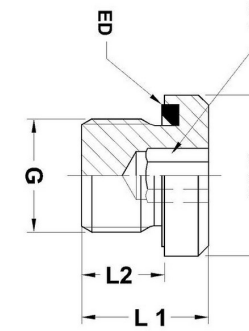
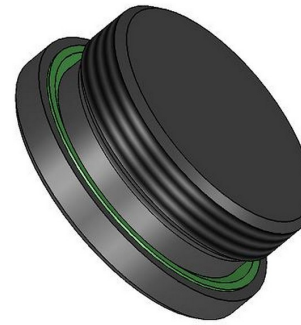


**HYDROMATIK**  
connections par excellence

## Metric Bite Type Fittings

### SHP-ED - SOCKET HEAD PLUG WITH ELASTOMERIC SEAL

SHP-ED | BSP Threads - G



Part No.	G	d3	L1	L2	S1
SHP 1/8 ED	1/8	14	12	8	5
SHP 1/4 ED	1/4	18.9	17	12	6
SHP 3/8 ED	3/8	22	17	12	8
SHP 1/2 ED	1/2	26.9	19	14	10
SHP 3/4 ED	3/4	32	21	16	12
SHP 1 ED	1	39.9	22.5	16	17
SHP 1 1/4 ED	1 1/4	49.9	22.5	16	22
SHP 1 1/2 ED	1 1/2	55	22.5	16	24
SHP 2 ED	2	70	25	20	24

Dimensions given approx. fig. with tightened nut

Temp range without pressure reductions

for 'O' Ring sealing of NBR (buna N- Std) -35Â° to +100Â° C, for FPM

(Viton - On request) -25Â° to +120Â° C.