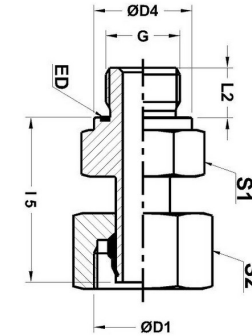
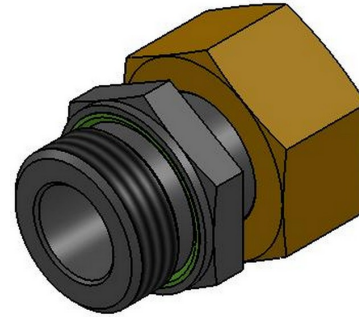




HYDROMATIK
connections par excellence

Metric Bite Type Fittings

SP-M-ED - STAND PIPE ADAPTOR SP-M-ED |



Part No.	Series	Tube OD	D1	L1	L2	S1	S2	D4	G
SP 06-LM-ED	Light-250 Bar	6	M12 X 15	24.5	8	14	14	14	M10 X 1
SP 08-LM-ED	Light-250 Bar	8	M14 X 1.5	26.5	12	17	17	17	M12 X 1.5
SP 10-LM-ED	Light-250 Bar	10	M16 X 1.5	28.5	12	19	19	19	M14 X 1.5
SP 12-LM-ED	Light-250 Bar	12	M18 X 1.5	31	12	22	22	21.9	M16 X 1.5
SP 15-LM-ED	Light-250 Bar	15	M22 X 1.5	32.5	14	24	27	23.9	M18 X 1.5
SP 18-LM-ED	Light-160 Bar	18	M26 X 1.5	32.5	14	27	32	27	M22 X 1.5
SP 22-LM-ED	Light-160 Bar	22	M30 X 2.0	34	16	32	36	31.9	M26 X 1.5
SP 28-LM-ED	Light-100 Bar	28	M36 X 2.0	36.5	18	41	41	39.9	M33 X 2.0
SP 35-LM-ED	Light-100 Bar	35	M45 X 2.0	43.5	20	50	50	49.9	M42 X 2.0
SP 42-LM-ED	Light-100 Bar	42	M52 X 2.0	46.5	22	55	60	55	M48 X 2.0
SP 06-SM-ED	Heavy-630 Bar	6	M14 X 1.5	28	12	17	17	17	M12 X 1.5
SP 08-SM-ED	Heavy-630 Bar	8	M16 X 1.5	28.5	12	19	19	19	M14 X 1.5
SP 10-SM-ED	Heavy-630 Bar	10	M18 X 1.5	30.5	12	22	22	21.9	M16 X 1.5
SP 12-SM-ED	Heavy-630 Bar	12	M20 X 1.5	32	12	24	24	23.9	M18 X 1.5
SP 14-SM-ED	Heavy-630 Bar	14	M22 X 1.5	36.5	14	27	27	25.9	M20 X 1.5

SP 16-SM-ED	Heavy-400 Bar	16	M24 X 1.5	35.5	14	27	30	27	M22 X 1.5
SP 20-SM-ED	Heavy-400 Bar	20	M30 X 2.0	39.5	16	32	36	32	M27 X 2.0
SP 25-SM-ED	Heavy-400 Bar	25	M36 X 2.0	43.5	18	41	46	39.9	M33 X 2.0
SP 30-SM-ED	Heavy-250 Bar	30	M42 X 2.0	45.5	20	50	50	49.9	M42 X 2.0
SP 38-SM-ED	Heavy-250 Bar	38	M52 X 2.0	54	22	55	60	55	M48 X 2.0

Dimensions given approx. fig. with tightened nut