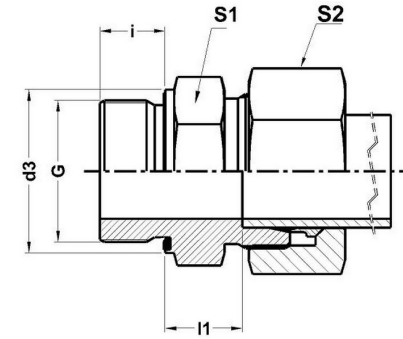
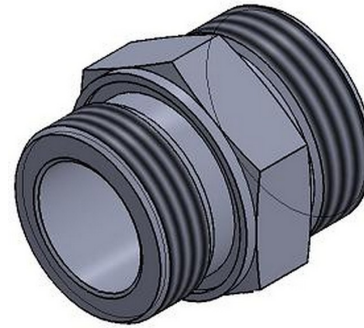




HYDROMATIK
connections par excellence

Metric Bite Type Fittings

GE-M-ED - STRAIGHT MALE STUD COUPLING GE-M-ED |
Male Stud Thread METRIC (Parallel) With Elastomeric Seal



Part No.	Series	Tube OD	l1	i	S2	S1	d3	G
GE 06-LM-ED	Light-315 Bar	6	8.5	8	14	14	14	M10 X 1.0
GE 08-LM-ED	Light-315 Bar	8	10	12	17	17	17	M12 X 1.5
GE 10-LM-ED	Light-315 Bar	10	11	12	19	19	19	M14 X 1.5
GE 12-LM-ED	Light-315 Bar	12	12.5	12	22	22	22	M16 X 1.5
GE 12-LM-ED	Light-315 Bar	12	12.5	12	22	24	23.9	M18 X 1.5
GE 12-LM-ED	Light-315 Bar	12	14	14	22	27	27	M22 X 1.5
GE 15-LM-ED	Light-315 Bar	15	13.5	12	27	24	23.9	M18 X 1.5
GE 15-LM-ED	Light-315 Bar	15	15	14	27	27	27	M22 X 1.5
GE 18-LM-ED	Light-160 Bar	18	14.5	14	32	27	27	M22 X 1.5
GE 22-LM-ED	Light-160 Bar	22	16.5	16	36	32	32	M26 X 1.5
GE 28-LM-ED	Light-100 Bar	28	17.5	18	41	41	40	M33 X 2.0
GE 35-LM-ED	Light-100 Bar	35	17.5	20	50	50	50	M42 X 2.0
GE 42-LM-ED	Light-100 Bar	42	19	22	60	55	55	M48 X 2.0
GE 06-SM-ED	Heavy-630 Bar	6	13	12	17	17	17	M12 X 1.5

GE 08-SM-ED	Heavy-630 Bar	8	15	12	19	19	19	M14 X 1.5
GE 10-SM-ED	Heavy-630 Bar	10	15	12	22	22	21.9	M16 X 1.5
GE 12-SM-ED	Heavy-630 Bar	12	17	12	24	24	23.9	M18 X 1.5
GE 14-SM-ED	Heavy-400 Bar	14	19	14	27	27	25.9	M20 X 1.5
GE 16-SM-ED	Heavy-400 Bar	16	18.5	14	30	27	27	M22 X 1.5
GE 20-SM-ED	Heavy-400 Bar	20	20.5	16	36	32	32	M27 X 2.0
GE 25-SM-ED	Heavy-400 Bar	25	23	18	46	41	49.9	M33 X 2.0
GE 30-SM-ED	Heavy-250 Bar	30	23.5	20	50	50	50	M42 X 2.0
GE 38-SM-ED	Heavy-250 Bar	38	26	22	60	55	55	M48 X 2.0

Dimensions given approx. Fig. with tightened nut.

Part No. Given refers to complete assembly - Steel Part