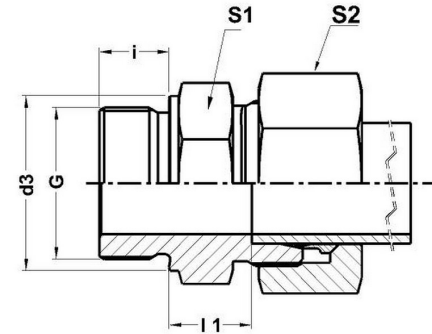




HYDROMATIK
connections par excellence

Metric Bite Type Fittings

GE-LM - STRAIGHT MALE STUD COUPLING GE-LM | Male Stud Thread METRIC;Cutting Face DIN 3852 Form 'B';(On Request Form 'A' also Available)



Part No.	Series	Tube OD	l1	i	S2	S1	d3	G
GE 06 LM	Light-250 Bar	6	8.5	8	14	14	14	M10 X 1.0
GE 08 LM	Light-250 Bar	8	10	12	17	17	17	M12 X 1.5
GE 08 LM	Light-250 Bar	8	11.5	12	17	24	23	M18 X 1.5
GE 10 LM	Light-250 Bar	10	11	12	19	19	19	M14 X 1.5
GE 10 LM	Light-250 Bar	10	12.5	12	19	22	21	M16 X 1.5
GE 10 LM	Light-250 Bar	10	12.5	12	19	24	23	M18 X 1.5
GE 10 LM	Light-250 Bar	10	14	14	19	27	27	M22 X 1.5
GE 12 LM	Light-250 Bar	12	11	12	22	19	19	M14 X 1.5
GE 12 LM	Light-250 Bar	12	12.5	12	22	22	21	M16 X 1.5
GE 12 LM	Light-250 Bar	12	12.5	12	22	24	23	M18 X 1.5
GE 12 LM	Light-250 Bar	12	14	14	22	27	27	M22 X 1.5
GE 15 LM	Light-250 Bar	15	13	12	27	24	21	M16 X 1.5
GE 15 LM	Light-250 Bar	15	13.5	12	27	24	23	M18 X 1.5

GE 15 LM	Light-250 Bar	15	15	14	27	27	27	M22 X 1.5
GE 18 LM	Light-160 Bar	18	14	12	32	27	23	M18 X 1.5
GE 18 LM	Light-160 Bar	18	14.5	14	32	27	27	M22 X 1.5
GE 22 LM	Light-160 Bar	22	16.5	14	36	32	27	M22 X 1.5
GE 22 LM	Light-160 Bar	22	16.5	16	36	32	31	M26 X 1.5
GE 28 LM	Light-100 Bar	28	17.5	18	41	41	39	M33 X 2.0
GE 35 LM	Light-100 Bar	35	17.5	20	50	50	49	M42 X 2.0
GE 42 LM	Light-100 Bar	42	19	22	60	55	55	M48 X 2.0

Dimensions given approx. Fig. with tightened nut.

Part No. Given refers to complete assembly - Steel Part