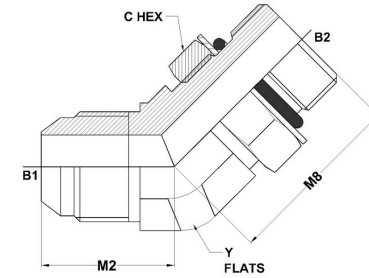
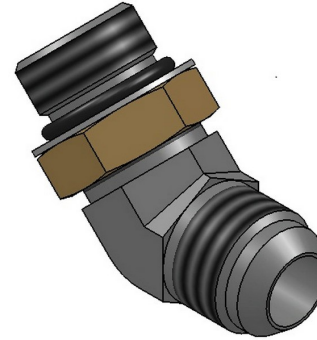




**HYDROMATIK**  
connections par excellence

## Tube Fittings & Adapters

**MJ-MAORB 45°** 6802-NWO Series | SAE# 070320 / MS# 51528



PART NO.SIZE	TUBE O.D.	B1 SAE 37	B2 SAE ORB	B1 DRILL	B2 DRILL	M2 LGTH	M8 LGTH	C HEX	Y FLATS
6802-16-16-NWO-FG	1	1-5/16-12	1-5/16-12	0.844	0.844	1.47	1.86	1.500	1.312
6802-16-20-NWO-FG	1	1-5/16-12	1-5/8-12	0.844	1.078	1.54	1.91	1.875	1.625
6802-20-16-NWO-FG	1-1/4	1-5/8-12	1-5/16-12	1.078	0.844	1.59	1.91	1.500	1.625
6802-20-20-NWO-FG	1-1/4	1-5/8-12	1-5/8-12	1.078	1.078	1.59	1.91	1.875	1.625
6802-20-24-NWO-FG	1-1/4	1-5/8-12	1-7/8-12	1.078	1.312	1.85	1.91	2.125	1.875
6802-24-20-NWO-FG	1-1/2	1-7/8-12	1-5/8-12	1.312	1.078	1.78	1.91	1.875	1.875
6802-24-24-NWO-FG	1-1/2	1-7/8-12	1-7/8-12	1.312	1.312	1.78	1.91	2.125	1.875
6802-32-32-NWO-FG	2	2-1/2-12	2-1/2-12	1.781	1.781	2.22	1.86	2.750	2.500
6802-02-02-NWO-FG	1/8	5/16-24	5/16-24	0.062	0.062	0.69	0.88	0.438	0.438
6802-04-04-NWO-FG	1/4	7/16-20	7/16-20	0.172	0.172	0.72	1.05	0.563	0.438
6802-04-05-NWO-FG	1/4	7/16-20	1/2-20	0.172	0.234	0.77	1.05	0.625	0.562
6802-04-06-NWO-FG	1/4	7/16-20	9/16-18	0.172	0.297	0.82	1.14	0.688	0.562
6802-04-08-NWO-FG	1/4	7/16-20	3/4-16	0.172	0.391	0.85	1.30	0.875	0.750
6802-05-04-NWO-FG	5/16	1/2-20	7/16-20	0.234	0.172	0.77	1.05	0.563	0.562

6802-05-05-NWO-FG	5/16	1/2-20	1/2-20	0.234	0.234	0.77	1.05	0.625	0.562
6802-05-06-NWO-FG	5/16	1/2-20	9/16-18	0.234	0.297	0.82	1.14	0.688	0.562
6802-06-04-NWO-FG	3/8	9/16-18	7/16-20	0.297	0.172	0.83	1.08	0.563	0.562
6802-06-05-NWO-FG	3/8	9/16-18	1/2-20	0.297	0.234	0.83	1.14	0.625	0.562
6802-06-06-NWO-FG	3/8	9/16-18	9/16-18	0.297	0.297	0.83	1.14	0.688	0.562
6802-06-08-NWO-FG	3/8	9/16-18	3/4-16	0.297	0.391	0.87	1.30	0.875	0.750
6802-06-10-NWO-FG	3/8	9/16-18	7/8-14	0.297	0.484	0.88	1.52	1.000	0.875
6802-06-12-NWO-FG	3/8	9/16-18	1-1/16-12	0.297	0.609	0.93	1.73	1.250	1.062
6802-08-04-NWO-FG	1/2	3/4-16	7/16-20	0.391	0.172	0.98	1.11	0.563	0.750
6802-08-06-NWO-FG	1/2	3/4-16	9/16-18	0.391	0.297	0.98	1.17	0.688	0.750
6802-08-08-NWO-FG	1/2	3/4-16	3/4-16	0.391	0.391	0.98	1.30	0.875	0.750
6802-08-10-NWO-FG	1/2	3/4-16	7/8-14	0.391	0.484	0.99	1.52	1.000	0.875
6802-08-12-NWO-FG	1/2	3/4-16	1-1/16-12	0.391	0.609	1.04	1.73	1.250	1.062
6802-10-08-NWO-FG	5/8	7/8-14	3/4-16	0.484	0.391	1.11	1.36	0.875	0.875
6802-10-10-NWO-FG	5/8	7/8-14	7/8-14	0.484	0.484	1.11	1.52	1.000	0.875
6802-10-12-NWO-FG	5/8	7/8-14	1-1/16-12	0.484	0.609	1.16	1.73	1.250	1.062
6802-12-08-NWO-FG	3/4	1-1/16-12	3/4-16	0.609	0.391	1.28	1.41	0.875	1.062
6802-12-10-NWO-FG	3/4	1-1/16-12	7/8-14	0.609	0.484	1.28	1.57	1.000	1.062
6802-12-12-NWO-FG	3/4	1-1/16-12	1-1/16-12	0.609	0.609	1.28	1.73	1.250	1.062
6802-12-14-NWO-FG	3/4	1-1/16-12	1-3/16-12	0.609	0.719	1.42	1.86	1.375	1.312
6802-12-16-NWO-FG	3/4	1-1/16-12	1-5/16-12	0.609	0.844	1.42	1.86	1.500	1.312
6802-14-14-NWO-FG	5/8	1-3/16-12	1-3/16-12	0.719	0.719	1.45	1.86	1.375	1.312
6802-16-12-NWO-FG	1	1-5/16-12	1-1/16-12	0.844	0.609	1.47	1.86	1.250	1.312

6802-16-14-NWO-FG	1	1-5/16-12	1-3/16-12	0.844	0.719	1.47	1.86	1.375	1.312
-------------------	---	-----------	-----------	-------	-------	------	------	-------	-------