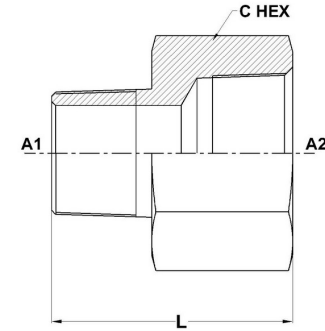
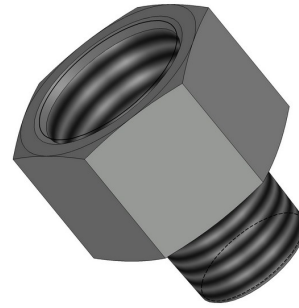




HYDROMATIK
connections par excellence

Tube Fittings & Adapters

MP-FP Straight Expander 5405 Series | SAE# 140139



PART NO. SIZE	A1 NPTF	A2 NPTF	A1 DRILL	L LGTH	C HEX
5405-01-02	1/16-27	1/8-27	0.117	1.04	0.625
5405-02-02	1/8-27	1/8-27	0.188	1.04	0.625
5405-02-04	1/8-27	1/4-18	0.188	1.21	0.750
5405-02-06	1/8-27	3/8-18	0.188	1.25	0.875
5405-02-08	1/8-27	1/2-14	0.188	1.49	1.125
5405-04-02	1/4-18	1/8-27	0.281	1.21	0.625
5405-04-04	1/4-18	1/4-18	0.281	1.39	0.750
5405-04-06	1/4-18	3/8-18	0.281	1.44	0.875
5405-04-08	1/4-18	1/2-14	0.281	1.68	1.125
5405-04-12	1/4-18	3/4-14	0.281	1.74	1.375
5405-06-02	3/8-18	1/8-27	0.333	1.21	0.750
5405-06-04	3/8-18	1/4-18	0.406	1.41	0.750
5405-06-06	3/8-18	3/8-18	0.406	1.44	0.875
5405-06-08	3/8-18	1/2-14	0.406	1.68	1.125

5405-06-12	3/8-18	3/4-14	0.406	1.74	1.375
5405-08-04	1/2-14	1/4-18	0.431	1.60	0.875
5405-08-06	1/2-14	3/8-18	0.531	1.66	0.875
5405-08-08	1/2-14	1/2-14	0.531	1.87	1.125
5405-08-12	1/2-14	3/4-14	0.531	1.93	1.375
5405-08-16	1/2-14	1-11-1/2	0.531	2.18	1.625
5405-12-04	3/4-14	1/4-18	0.431	1.60	1.125
5405-12-06	3/4-14	3/8-18	0.571	1.66	1.125
5405-12-08	3/4-14	1/2-14	0.697	1.89	1.125
5405-12-12	3/4-14	3/4-14	0.719	1.93	1.375
5405-12-16	3/4-14	1-11-1/2	0.719	2.18	1.625
5405-12-20	3/4-14	1-1/4-11-1/2	0.719	2.27	2.000
5405-16-08	1-11-1/2	1/2-14	0.697	2.08	1.375
5405-16-12	1-11-1/2	3/4-14	0.907	2.14	1.375
5405-16-16	1-11-1/2	1-11-1/2	0.938	2.37	1.625
5405-16-20	1-11-1/2	1-1/4-11-1/2	0.938	2.46	2.000
5405-16-24	1-11-1/2	1-1/2-11-1/2	0.938	2.47	2.375
5405-20-16	1-1/4-11-1/2	1-11-1/2	1.142	2.42	1.750
5405-20-20	1-1/4-11-1/2	1-1/4-11-1/2	1.250	2.49	2.000
5405-20-24	1-1/4-11-1/2	1-1/2-11-1/2	1.250	2.50	2.375
5405-20-32	1-1/4-11-1/2	2-11-1/2	1.250	2.60	2.875
5405-24-20	1-1/2-11-1/2	1-1/4-11-1/2	1.486	2.54	2.000
5405-24-24	1-1/2-11-1/2	1-1/2-11-1/2	1.500	2.53	2.375

5405-24-32	1-1/2-11-1/2	2-11-1/2	1.500	2.63	2.875
5405-32-32	2-11-1/2	2-11-1/2	1.938	2.66	2.875