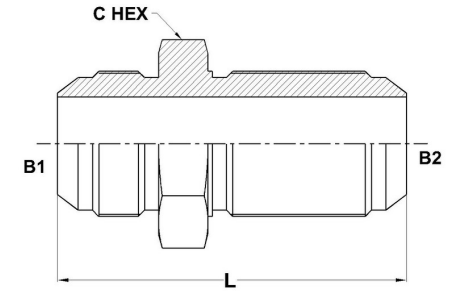
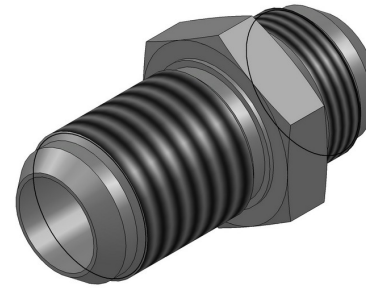




HYDROMATIK
connections par excellence

Tube Fittings & Adapters

MJ-MJ Bulkhead Straight 2700 Series | SAE# 070601 / MS# 51520



PART NO.SIZE	TUBE O.D.	B1 SAE 37	B2 SAE 37	B1 DRILL	B2 DRILL	L LGTH	C HEX
2700-02-02	1/8	5/16-24	5/16-24	0.062	0.062	1.87	0.562
2700-03-03	3/16	3/8-24	3/8-24	0.125	0.125	1.90	0.625
2700-04-04	1/4	7/16-20	7/16-20	0.172	0.172	2.07	0.688
2700-04-06	1/4	7/16-20	9/16-18	0.297	0.812	2.17	0.172
2700-05-05	5/16	1/2-20	1/2-20	0.234	0.234	2.07	0.750
2700-06-04	3/8	9/16-18	7/16-20	0.297	0.172	2.10	0.812
2700-06-06	3/8	9/16-18	9/16-18	0.297	0.297	2.18	0.812
2700-08-08	1/2	3/4-16	3/4-16	0.391	0.391	2.44	1.000
2700-10-10	5/8	7/8-14	7/8-14	0.484	0.484	2.74	1.125
2700-12-12	3/4	1-1/16-12	1-1/16-12	0.609	0.609	3.09	1.375
2700-14-14	7/8	1-3/16-12	1-3/16-12	0.719	0.719	3.12	1.500
2700-16-12	1	1-5/16-12	1-1/16-12	0.844	0.609	3.14	1.625
2700-16-16	1	1-5/16-12	1-5/16-12	0.844	0.844	3.14	1.625

2700-20-20	1-1/4	1-5/8-12	1-5/8-12	1.078	1.078	3.31	1.875
2700-24-24	1-1/2	1-7/8-12	1-7/8-12	1.312	1.312	3.52	2.125
2700-32-32	2	2-1/2-12	2-1/2-12	1.781	1.781	4.20	2.750