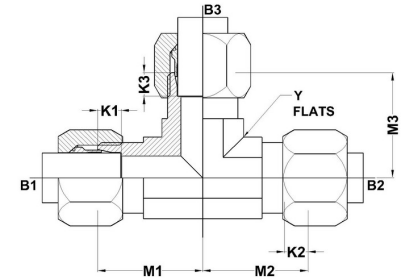
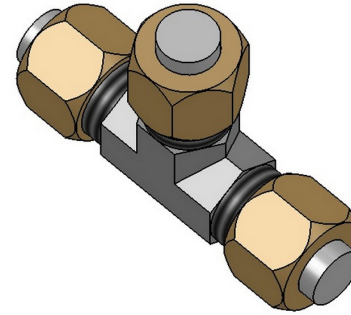




HYDROMATIK
connections par excellence

Flareless Bite Type Fittings

BT-BT-BT Tee C2603 Series | SAE# 080401 / MS#51811



PART NO. SIZE	TUBE O.D.	B1 THREAD	B2 THREAD	B3 THREAD	B1 DRILL	B2 DRILL	B3 DRILL	M1 LGTH	M2 LGTH	M3 LGTH	K1 DEPTH	K2 DEPTH	K3 DEPTH	Y FLATS
C2603-02-02-02-FG	1/8	5/16-24	5/16-24	5/16-24	0.093	0.093	0.093	0.77	0.77	0.77	0.188	0.188	0.188	0.438
C2603-03-03-03-FG	3/16	3/8-24	3/8-24	3/8-24	0.125	0.125	0.125	0.83	0.83	0.83	0.234	0.234	0.234	0.438
C2603-04-04-04-FG	1/4	7/16-20	7/16-20	7/16-20	0.203	0.203	0.203	0.89	0.89	0.89	0.234	0.234	0.234	0.438
C2603-05-05-05-FG	5/16	1/2-20	1/2-20	1/2-20	0.234	0.234	0.234	0.95	0.95	0.95	0.250	0.250	0.250	0.562
C2603-06-06-06-FG	3/8	9/16-18	9/16-18	9/16-18	0.281	0.281	0.281	1.05	1.05	1.05	0.250	0.250	0.250	0.562
C2603-08-08-08-FG	1/2	3/4-16	3/4-16	3/4-16	0.422	0.422	0.422	1.25	1.25	1.25	0.305	0.305	0.305	0.750
C2603-10-10-10-FG	5/8	7/8-14	7/8-14	7/8-14	0.500	0.500	0.500	1.42	1.42	1.42	0.350	0.350	0.350	0.875
C2603-12-12-12-FG	3/4	1-1/16-12	1-1/16-12	1-1/16-12	0.656	0.656	0.656	1.58	1.58	1.58	0.350	0.350	0.350	1.062
C2603-14-14-14-FG	7/8	1-3/16-12	1-3/16-12	1-3/16-12	0.719	0.719	0.719	1.66	1.66	1.66	0.350	0.350	0.350	1.312
C2603-16-16-16-FG	1	1-5/16-12	1-5/16-12	1-5/16-12	0.875	0.875	0.875	1.73	1.73	1.73	0.415	0.415	0.415	1.312
C2603-20-20-16-FG	1-1/4	1-5/8-12	1-5/8-12	1-5/16-12	1.093	1.093	0.875	1.89	1.89	1.89	0.415	0.415	0.415	1.625
C2603-20-20-20-FG	1-1/4	1-5/8-12	1-5/8-12	1-5/8-12	1.093	1.093	1.093	1.89	1.89	1.89	0.415	0.415	0.415	1.625
C2603-24-24-24-FG	1-1/2	1-7/8-12	1-7/8-12	1-7/8-12	1.344	1.344	1.344	2.02	2.02	2.02	0.485	0.485	0.485	1.875
C2603-32-32-32-FG	2	2-1/2-12	2-1/2-12	2-1/2-12	1.813	1.813	1.813	2.45	2.45	2.45	0.485	0.485	0.485	2.500

