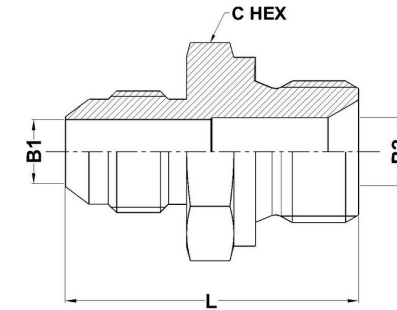
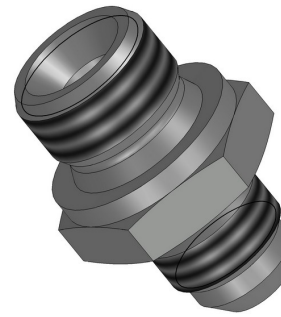




HYDROMATIK
connections par excellence

International Fittings

MJ-MBSPP 7002 Series |



PART NO.SIZE	TUBE O.D.	B1 JIC	B2 BSPP	B1 DRILL	B2 DRILL	L LGTH	C HEX
7002-04-02	1/4	7/16-20	1/8-28	4.4	3.5	27.0	14.0
7002-04-04	1/4	7/16-20	1/4-19	4.4	6.3	32.0	19.0
7002-04-06	1/4	7/16-20	3/8-19	4.4	7.9	34.0	22.0
7002-04-04	1/4	7/16-20	1/2-14	4.4	11.1	38.0	27.0
7002-05-02	5/16	1/2-20	1/8-28	6.0	3.5	28.8	14.0
7002-05-04	5/16	1/2-20	1/4-19	6.0	6.3	32.0	19.0
7002-05-06	5/16	1/2-20	3/8-19	6.0	7.9	34.0	22.0
7002-05-08	5/16	1/2-20	1/2-14	6.0	11.1	38.0	27.0
7002-05-12	5/16	1/2-20	3/4-14	6.0	16.7	42.0	32.0
7002-06-02	3/8	9/16-18	1/8-28	7.5	3.5	29.7	17.0
7002-06-04	3/8	9/16-18	1/4-19	7.5	4.7	32.1	19.0
7002-06-06	3/8	9/16-18	3/8-19	7.5	7.9	34.1	22.0
7002-06-08	3/8	9/16-18	1/2-14	7.5	11.1	38.1	27.0
7002-06-10	3/8	9/16-18	5/8-14	7.5	14.3	42.1	30.0
7002-06-12	3/8	9/16-18	3/4-14	7.5	16.7	42.1	32.0

7002-08-04	1/2	3/4-16	1/4-19	9.9	4.7	35.4	19.0
7002-08-06	1/2	3/4-16	3/8-19	9.9	7.9	36.7	22.0
7002-08-08	1/2	3/4-16	1/2-14	9.9	11.1	40.7	27.0
7002-08-10	1/2	3/4-16	5/8-14	9.9	14.3	44.7	30.0
7002-08-12	1/2	3/4-16	3/4-14	9.9	16.7	44.7	32.0
7002-08-16	1/2	3/4-16	1-11	9.9	22.2	50.7	41.0
7002-10-04	5/8	7/8-14	1/4-19	12.3	4.7	39.5	24.0
7002-10-06	5/8	7/8-14	3/8-19	12.3	7.9	40.5	24.0
7002-10-08	5/8	7/8-14	1/2-14	12.3	11.1	43.3	27.0
7002-10-10	5/8	7/8-14	5/8-14	12.3	14.3	47.3	30.0
7002-10-12	5/8	7/8-14	3/4-14	12.3	16.7	47.3	32.0
7002-10-16	5/8	7/8-14	1-11	12.3	22.2	53.3	41.0
7002-12-06	3/4	1-1/16-12	3/8-19	15.5	7.9	45.0	27.0
7002-12-08	3/4	1-1/16-12	1/2-14	15.5	11.1	47.0	27.0
7002-12-10	3/4	1-1/16-12	5/8-14	15.5	14.3	49.9	30.0
7002-12-12	3/4	1-1/16-12	3/4-14	15.5	16.7	49.9	32.0
7002-12-16	3/4	1-1/16-12	1-11	15.5	22.2	55.9	41.0
7002-12-20	3/4	1-1/16-12	1-1/4-11	15.5	28.6	60.9	50.0
7002-14-12	7/8	1-3/16-12	3/4-14	18.3	16.7	49.5	32.0
7002-14-16	7/8	1-3/16-12	1-11	18.3	22.2	56.6	41.0
7002-16-08	1	1-5/16-12	1/2-14	21.5	11.1	48.1	36.0
7002-16-12	1	1-5/16-12	3/4-14	21.5	16.7	50.1	36.0
7002-16-16	1	1-5/16-12	1-11	21.5	22.2	57.1	41.0

7002-16-20	1	1-5/16-12	1-1/4-11	21.5	28.6	62.1	50.0
7002-16-24	1	1-5/16-12	1-1/2-11	21.5	33.3	68.1	55.0
7002-20-12	1-1/4	1-5/8-12	3/4-14	27.5	16.7	53.4	46.0
7002-20-16	1-1/4	1-5/8-12	1-11	27.5	22.2	56.4	46.0
7002-20-20	1-1/4	1-5/8-12	1-1/4-11	27.5	28.6	63.3	50.0
7002-20-24	1-1/4	1-5/8-12	1-1/2-11	27.5	33.3	69.3	55.0
7002-24-16	1-1/2	1-7/8-12	1-11	33.0	22.2	61.3	50.0
7002-24-20	1-1/2	1-7/8-12	1-1/4-11	33.0	28.6	62.3	50.0
7002-24-24	1-1/2	1-7/8-12	1-1/2-11	33.0	33.3	72.5	55.0
7002-24-32	1-1/2	1-7/8-12	2-11	33.0	46.0	81.5	70.0
7002-32-16	2	2-1/2-12	1-11	45.0	22.2	71.5	65.0
7002-32-20	2	2-1/2-12	1-1/4-11	45.0	28.6	72.5	65.0
7002-32-24	2	2-1/2-12	1-1/2-11	45.0	33.3	74.5	65.0
7002-32-32	2	2-1/2-12	2-11	45.0	46.0	87.9	70.0

ADD -BS AS SUFFIX TO ORDER WITH BONDED SEAL
ORDER PART NUMBER 7012 FOR RETAINING RING STYLE