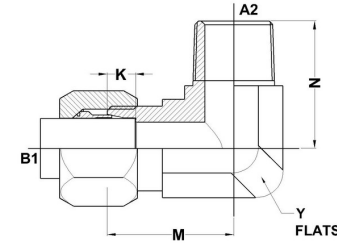
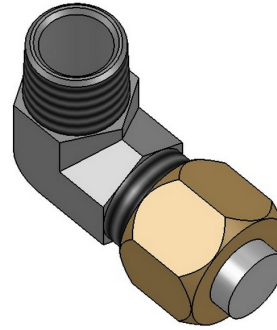




HYDROMATIK
connections par excellence

Flareless Bite Type Fittings

BT-MP-Elbow 90° C2501 Series | SAE# 080202 / MS#51815



| PART NO.SIZE | TUBE O.D. | B1 THREAD | A2 NPTF | B1 DRILL | A2 DRILL | M LGTH | N LGTH | K DEPTH | Y FLATS |
|----------------|-----------|-----------|---------|----------|----------|--------|--------|---------|---------|
| C2501-02-02-FG | 1/8 | 5/16-24 | 1/8-27 | 0.093 | 0.188 | 0.77 | 0.72 | 0.188 | 0.438 |
| C2501-03-02-FG | 3/16 | 3/8-24 | 1/8-27 | 0.125 | 0.188 | 0.83 | 0.72 | 0.234 | 0.438 |
| C2501-04-02-FG | 1/4 | 7/16-20 | 1/8-27 | 0.203 | 0.188 | 0.89 | 0.78 | 0.234 | 0.438 |
| C2501-04-04-FG | 1/4 | 7/16-20 | 1/4-18 | 0.203 | 0.281 | 1.03 | 1.09 | 0.234 | 0.562 |
| C2501-04-06-FG | 1/4 | 7/16-20 | 3/8-18 | 0.203 | 0.406 | 1.12 | 1.22 | 0.234 | 0.750 |
| C2501-04-08-FG | 1/4 | 7/16-20 | 1/2-14 | 0.203 | 0.531 | 1.22 | 1.47 | 0.234 | 0.875 |
| C2501-05-02-FG | 5/16 | 1/2-20 | 1/8-27 | 0.234 | 0.188 | 0.95 | 0.81 | 0.250 | 0.562 |
| C2501-05-04-FG | 5/16 | 1/2-20 | 1/4-18 | 0.234 | 0.281 | 1.03 | 1.09 | 0.250 | 0.562 |
| C2501-06-02-FG | 3/8 | 9/16-18 | 1/8-27 | 0.281 | 0.188 | 1.05 | 0.90 | 0.250 | 0.562 |
| C2501-06-04-FG | 3/8 | 9/16-18 | 1/4-18 | 0.281 | 0.281 | 1.05 | 1.09 | 0.250 | 0.562 |
| C2501-06-06-FG | 3/8 | 9/16-18 | 3/8-18 | 0.281 | 0.406 | 1.14 | 1.22 | 0.250 | 0.750 |
| C2501-06-08-FG | 3/8 | 9/16-18 | 1/2-14 | 0.281 | 0.531 | 1.24 | 1.47 | 0.250 | 0.875 |
| C2501-08-04-FG | 1/2 | 3/4-16 | 1/4-18 | 0.422 | 0.281 | 1.25 | 1.22 | 0.305 | 0.750 |
| C2501-08-06-FG | 1/2 | 3/4-16 | 3/8-18 | 0.422 | 0.406 | 1.25 | 1.22 | 0.305 | 0.750 |
| C2501-08-08-FG | 1/2 | 3/4-16 | 1/2-14 | 0.422 | 0.531 | 1.35 | 1.47 | 0.305 | 0.875 |

| | | | | | | | | | |
|----------------|-------|-----------|--------------|-------|-------|------|------|-------|-------|
| C2501-08-12-FG | 1/2 | 3/4-16 | 3/4-14 | 0.422 | 0.719 | 1.43 | 1.59 | 0.305 | 1.06 |
| C2501-10-06-FG | 5/8 | 7/8-14 | 3/8-18 | 0.500 | 0.406 | 1.42 | 1.28 | 0.350 | 0.875 |
| C2501-10-08-FG | 5/8 | 7/8-14 | 1/2-14 | 0.500 | 0.531 | 1.42 | 1.47 | 0.350 | 0.875 |
| C2501-10-12-FG | 5/8 | 7/8-14 | 3/4-14 | 0.500 | 0.719 | 1.50 | 1.59 | 0.350 | 1.062 |
| C2501-12-08-FG | 3/4 | 1-1/16-12 | 1/2-14 | 0.656 | 0.531 | 1.58 | 1.59 | 0.350 | 1.062 |
| C2501-12-12-FG | 3/4 | 1-1/16-12 | 3/4-14 | 0.656 | 0.719 | 1.58 | 1.59 | 0.350 | 1.062 |
| C2501-16-12-FG | 1 | 1-5/16-12 | 3/4-14 | 0.875 | 0.719 | 1.73 | 1.78 | 0.415 | 1.312 |
| C2501-16-16-FG | 1 | 1-5/16-12 | 1-11 1/2 | 0.875 | 0.938 | 1.73 | 1.97 | 0.415 | 1.312 |
| C2501-20-20-FG | 1-1/4 | 1-5/8-12 | 1-1/4-11 1/2 | 1.093 | 1.250 | 1.89 | 2.38 | 0.415 | 1.625 |
| C2501-24-24-FG | 1-1/2 | 1-7/8-12 | 1-1/2-11 1/2 | 1.344 | 1.500 | 2.02 | 2.64 | 0.485 | 1.875 |
| C2501-32-32-FG | 2 | 2-1/2-12 | 2-11 1/2 | 1.813 | 1.938 | 2.45 | 3.00 | 0.485 | 2.500 |