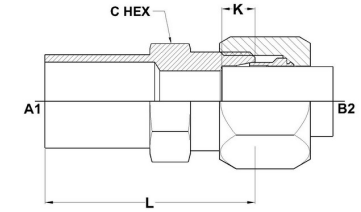
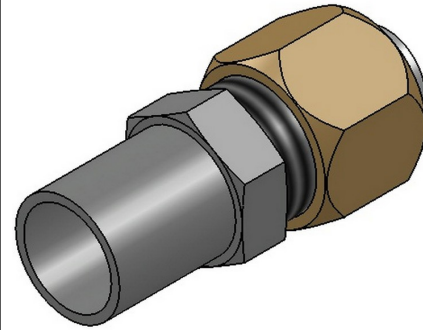




HYDROMATIK
connections par excellence

Flareless Bite Type Fittings

Tube-BT Reducer C2406 Series | SAE# 080123



| PART NO. SIZE | A1 TUBE O.D. | A1 TUBE | B2 TUBE | B2 THREAD | A1 DRILL | B2 DRILL | L LGTH | K DEPTH | C HEX |
|---------------|--------------|---------|---------|-----------|----------|----------|--------|---------|-------|
| C2406-06-04 | 3/8 | 0.375 | 1/4 | 7/16-20 | 0.250 | 0.203 | 1.61 | 0.234 | 0.500 |
| C2406-08-04 | 1/2 | 0.500 | 1/4 | 7/16-20 | 0.375 | 0.203 | 1.73 | 0.234 | 0.562 |
| C2406-08-06 | 1/2 | 0.500 | 3/8 | 9/16-18 | 0.375 | 0.281 | 1.77 | 0.250 | 0.625 |
| C2406-10-08 | 5/8 | 0.625 | 1/2 | 3/4-16 | 0.500 | 0.422 | 1.96 | 0.305 | 0.812 |
| C2406-12-06 | 3/4 | 0.750 | 3/8 | 9/16-18 | 0.625 | 0.281 | 1.93 | 0.250 | 0.812 |
| C2406-12-08 | 3/4 | 0.750 | 1/2 | 3/4-16 | 0.625 | 0.422 | 2.03 | 0.305 | 0.812 |
| C2406-16-08 | 1 | 1.000 | 1/2 | 3/4-16 | 0.844 | 0.422 | 2.05 | 0.305 | 1.062 |
| C2406-16-12 | 1 | 1.000 | 3/4 | 1-1/16-12 | 0.844 | 0.656 | 2.24 | 0.350 | 1.125 |
| C2406-20-16 | 1-1/4 | 1.250 | 1 | 1-5/16-12 | 1.031 | 0.875 | 2.28 | 0.415 | 1.375 |