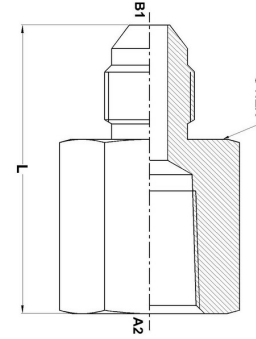
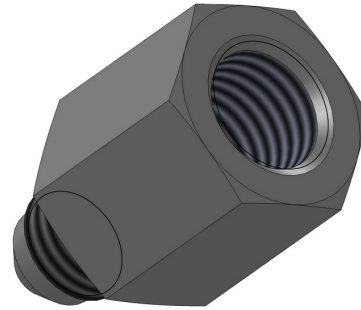




HYDROMATIK
connections par excellence

Tube Fittings & Adapters

MJ-FP Straight 2405 Series | SAE# 070103 / MS# 51503



PART NO.SIZE	TUBE O.D.	B1 SAE 37	A2 NPTF	B1 DRILL	L LGTH	C HEX
2405-02-02	1/8	5/16-24	1/8-27	0.062	1.12	0.562
2405-03-02	3/16	3/8-24	1/8-27	0.125	1.13	0.562
2405-03-04	3/16	3/8-24	1/4-18	0.125	1.32	0.750
2405-04-02	1/4	7/16-20	1/8-27	0.172	1.19	0.562
2405-04-04	1/4	7/16-20	1/4-18	0.172	1.39	0.750
2405-04-06	1/4	7/16-20	3/8-18	0.172	1.45	0.875
2405-04-08	1/4	7/16-20	1/2-14	0.172	1.68	1.125
2405-05-02	5/16	1/2-20	1/8-27	0.234	1.17	0.562
2405-05-04	5/16	1/2-20	1/4-18	0.234	1.39	0.750
2405-05-06	5/16	1/2-20	3/8-18	0.234	1.06	0.875
2405-06-02	3/8	9/16-18	1/8-27	0.297	1.19	0.750
2405-06-04	3/8	9/16-18	1/4-18	0.297	1.40	0.750
2405-06-06	3/8	9/16-18	3/8-18	0.297	1.46	0.875
2405-06-08	3/8	9/16-18	1/2-14	0.297	1.69	1.125

2405-06-12	3/8	9/16-18	3/4-14	0.297	1.75	1.375
2405-08-04	1/2	3/4-16	1/4-18	0.391	1.55	0.875
2405-08-06	1/2	3/4-16	3/8-18	0.391	1.56	0.875
2405-08-08	1/2	3/4-16	1/2-14	0.391	1.79	1.125
2405-08-12	1/2	3/4-16	3/4-14	0.391	1.85	1.375
2405-08-16	1/2	3/4-16	1-11 1/2	0.391	2.10	1.625
2405-10-04	5/8	7/8-14	1/4-18	0.484	1.66	1.125
2405-10-06	5/8	7/8-14	3/8-18	0.484	1.67	1.125
2405-10-08	5/8	7/8-14	1/2-14	0.484	1.89	1.125
2405-10-12	5/8	7/8-14	3/4-14	0.484	1.95	1.375
2405-10-16	5/8	7/8-14	1-11 1/2	0.484	2.20	1.625
2405-12-08	3/4	1-1/16-12	1/2-14	0.609	2.05	1.375
2405-12-12	3/4	1-1/16-12	3/4-14	0.609	2.06	1.375
2405-12-16	3/4	1-1/16-12	1-11 1/2	0.609	2.30	1.625
2405-14-08	7/8	1-3/16-12	1/2-14	0.719	2.05	1.375
2405-14-12	7/8	1-3/16-12	3/4-14	0.719	2.06	1.375
2405-16-12	1	1--5/16-12	3/4-14	0.844	2.12	1.625
2405-16-16	1	1-5/16-12	1-11 1/2	0.844	2.35	1.625
2405-16-20	1	1-5/8-12	1-1/4-11 1/2	0.844	2.44	2.000
2405-20-16	1-1/4	1-5/8-12	1-11 1/2	1.078	2.47	2.000
2405-20-20	1-1/4	1-5/8-12	1-1/4-11 1/2	1.078	2.49	2.000
2405-20-24	1-1/4	1-5/8-12	1-1/2-11 1/2	1.078	2.49	2.375
2405-24-16	1-1/2	1-7/8-12	1-11 1/2	1.312	2.60	2.375

2405-24-20	1-1/2	1-7/8-12	1-1/4-11 1/2	1.312	2.62	2.375
2405-24-24	1-1/2	1-7/8-12	1-1/2-11 1/2	1.312	2.62	2.375
2405-24-32	1-1/2	1-7/8-12	2-11-1/2	1.312	2.72	2.875
2405-32-24	2	2-1/2-12	1-1/2-11 1/2	1.781	2.95	2.875
2405-32-32	2	2-1/2-12	2-11 1/2	1.781	2.97	2.875