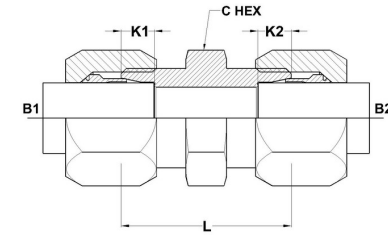
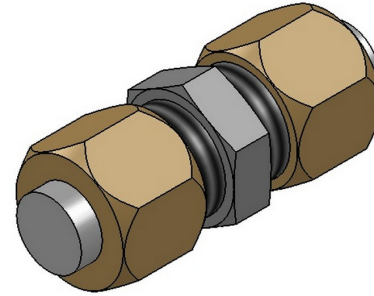




HYDROMATIK
connections par excellence

Flareless Bite Type Fittings

BT-BT Tube Union Straight C2403 Series | SAE# 080101 / MS# 51814



PART NO.SIZE	TUBE O.D.	B1 THREAD	B2 THREAD	B1 DRILL	B2 DRILL	L LGTH	K1 DEPTH	K2 DEPTH	C HEX
C2403-02-02	1/8	5/16-24	5/16-24	0.093	0.093	1.02	0.188	0.188	0.438
C2403-03-03	3/16	3/8-24	3/8-24	0.125	0.125	1.11	0.234	0.234	0.438
C2403-04-04	1/4	7/16-20	7/16-20	0.203	0.203	1.18	0.234	0.234	0.500
C2403-05-05	5/16	1/2-20.	1/2-20.	0.234	0.234	1.18	0.250	0.250	0.562
C2403-06-04	3/8 1/4	9/16-18	7/16-18	0.281	0.203	1.22	0.250	0.234	0.625
C2403-06-06	3/8	9/16-18	9/16-18	0.281	0.281	1.24	0.250	0.250	0.625
C2403-08-08	1/2	3/4-16	3/4-16	0.422	0.422	1.42	0.305	0.305	0.812
C2403-10-10	5/8	7/8-14	7/8-14	0.500	0.500	1.61	0.350	0.350	0.937
C2403-12-08	3/4 1/2	1-1/16-12	1/2-14	0.656	0.422	1.69	0.350	0.305	1.125
C2403-12-12	3/4	1-1/16-12	1-1/16-12	0.656	0.656	1.81	0.350	0.350	1.125
C2403-14-14	7/8	1-3/16-12	1-3/16-12	0.719	0.719	1.81	0.350	0.350	1.250
C2403-16-16	1	1-5/16-12	1-5/16-12	0.875	0.875	1.81	0.415	0.415	1.375
C2403-20-20	1-1/4	1-5/8-12	1-5/8-12	1.093	1.093	1.89	0.415	0.415	1.688

C2403-24-24	1-1/2	1-7/8-12	1-7/8-12	1.344	1.344	1.96	0.485	0.485	2.000
C2403-32-32	2	2-1/2-12	2-1/2-12	1.813	1.813	2.11	0.485	0.485	2.625