

Dimensioning

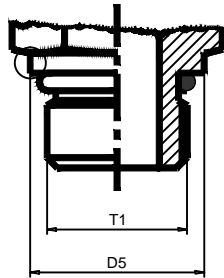
Male stud ends/port end dimensions for tube fittings

Preferred male stud ends for hydraulic applications

For new designs the metric version is recommended according to DIN ISO 6149

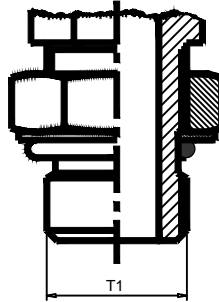
Male stud non-adjustable (without retaining -ring)

Sealing :O-ring
metric : DIN ISO 6149-2/3
UNF : ISO 11926-2/3

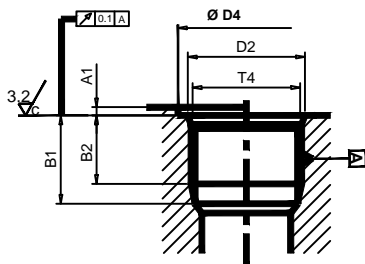


Male stud adjustable without retaining -ring

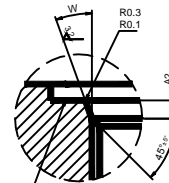
Sealing :O-ring
metric : DIN ISO 6149-2/3
UNF : ISO 11926-2/3



Identification groove
for metric thread



Port
Metric: DIN ISO 6149-1
BSPP : ISO 11926-1



Optional identification of metric port
marked with "M"

Thread T1	D5	D4		D2 0.1	A1 max.	A2 0.4	B1 min.	B2 min.	W ±1°	Identification internal	
		Small min.	Wide min.							Thread major diameter	Thread minor diameter
M 8X1	11.8	14	17	9.10	1.0	1.6	11.5	10.0	12°	8.00	6.92
M 10X1	13.8	16	20	11.10	1.0	1.6	11.5	10.0	12°	10.00	8.92
M 12X1.5	16.8	19	23	13.80	1.5	2.4	14.0	11.5	15°	12.00	10.38
M 14X1.5	18.8	21	25	15.80	1.5	2.4	14.0	11.5	15°	14.00	12.38
M 16X1.5	21.8	24	28	17.80	1.5	2.4	15.5	13.0	15°	16.00	14.38
M 18X1.5	23.8	26	30	19.80	2.0	2.4	17.0	14.5	15°	18.00	16.38
M 22X1.5	26.8	29	34	23.80	2.0	2.4	18.0	15.5	15°	22.00	20.38
M 27X2	31.8	34	40	29.40	2.0	3.1	22.0	19.0	15°	27.00	24.84
M 33X2	40.8	43	49	35.40	2.5	3.1	22.0	19.0	15°	33.00	30.84
M 42X2	49.8	52	60	44.40	2.5	3.1	22.5	19.5	15°	42.00	39.84
M 48X2	54.8	57	66	50.40	2.5	3.1	25.0	22.0	15°	48.00	45.84
7/16-20 UNF-2B	13.8	21	-	12.40	1.6	2.4	14.0	11.5	12°	11.11	9.74
1/2-20 UNF-2B	16.8	23	-	14.50	1.6	2.5	14.0	11.5	12°	12.70	11.30
9/16-18 UNF -2B	16.8	25	-	15.65	1.6	2.5	15.5	12.7	12°	14.29	12.76
3/4-16 UNF-2B	21.8	30	-	20.60	2.4	2.5	17.5	14.3	15°	19.05	17.33
7/8-14 UNF-2B	26.8	34	-	23.95	2.4	2.5	20.0	16.7	15°	22.23	20.26
1-1/16-12 UNF-2B	31.8	41	-	29.15	2.4	3.3	23.0	19.0	15°	26.99	24.69
1-5/16-12 UNF-2B	40.8	49	-	35.50	3.2	3.3	23.0	19.0	15°	33.34	31.04
1-5/8-12 UN-2B	49.8	58	-	43.50	3.2	3.3	23.0	19.0	15°	41.28	38.99
1-7/8-12 UN-2B	54.8	65	-	49.85	3.2	3.3	23.0	19.0	15°	47.63	45.33