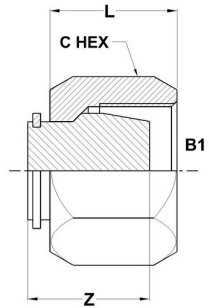


## Cap Nut | C0304-C Series

SAE# 080112 / MS# 51590

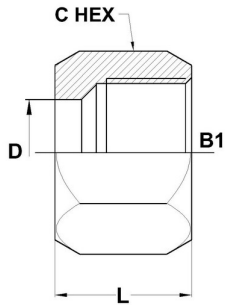


PART NO. SIZE	TUBE OD	THREA B1	L LGTH	Z LGTH	C HEX
C0304-C-02	1/8	5/16-24	0.53	0.58	0.375
C0304-C-04	1/4	7/16-20	0.70	0.72	0.562
C0304-C-05	5/16	1/2-20	0.72	0.74	0.625
C0304-C-06	3/8	9/16-18	0.75	0.77	0.688
C0304-C-08	1/2	3/4-16	0.84	0.93	0.875
C0304-C-10	5/8	7/8-14	0.92	0.94	1.000
C0304-C-12	3/4	1-1/16-12	0.97	0.93	1.250
C0304-C-16	1	1-5/16-12	1.05	1.08	1.500

C0304-C-20	1-1/4	1-5/8-12	1.05	1.19	2.000
------------	-------	----------	------	------	-------

## Nut | C0318 Series

SAE# 080110 / MS# 51823

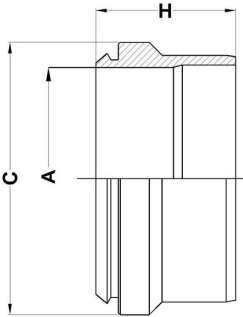


PART NO. SIZE	TUBE O.D.	THREAD B1	L LGTH	D BORE	C HEX
C0318-02	1/8	5/16-24	0.53	0.130	0.375
C0318-03	3/16	3/8-24	0.61	0.193	0.438
C0318-04	1/4	7/16-20	0.70	0.255	0.562
C0318-05	5/16	1/2-20	0.72	0.318	0.625
C0318-06	3/8	9/16-18	0.75	0.380	0.688
C0318-08	1/2	3/4-16	0.84	0.505	0.875
C0318-10	5/8	7/8-14	0.92	0.631	1.000
C0318-12	3/4	1-1/16-12	0.97	0.756	1.250
C0318-14	7/8	1-3/16-12	1.00	0.881	1.375

C0318-16	1	1-5/16-12	1.05	1.006	1.500
C0318-20	1-1/4	1-5/8-12	1.05	1.260	2.000
C0318-24	1-1/2	1-7/8-12	1.03	1.510	2.250
C0318-32	2	2-1/2-12	1.12	2.014	2.875

## Ferrule | C0319 Series

SAE# 080115A / MS# 51825A



PART NO.SIZE	TUBE O.D.	A	C	H
C0319-02	1/8	0.130	0.237	0.288
C0319-03	3/16	0.193	0.307	0.329
C0319-04	1/4	0.255	0.367	0.363
C0319-05	5/16	0.318	0.430	0.367
C0319-06	3/8	0.380	0.492	0.393
C0319-08	1/2	0.505	0.663	0.429
C0319-10	5/8	0.631	0.780	0.442
C0319-12	3/4	0.756	0.925	0.475
C0319-14	7/8	0.881	1.040	0.475

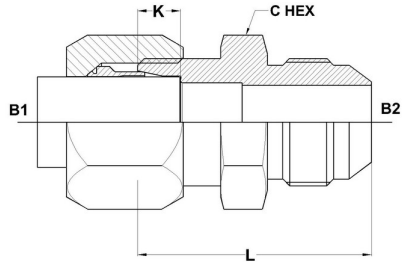
C0319-16	1	1.006	1.187	0.475
C0319-20	1-1/4	1.260	1.446	0.475
C0319-24	1-1/2	1.510	1.694	0.475
C0319-32	2	2.014	2.210	0.509



**HYDROMATIK**  
connections par excellence

## Flareless Bite Type Fittings

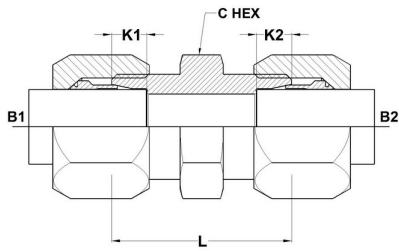
### BT-MJ | C2402 Series



PART NO. SIZE	TUBE O.D	B1 THREAD	B2 THREAD	B1 DRILL	B2 DRILL	L LGTH	K DEPTH	C HEX
C2402-04-04	1/4	7/16-20	7/16-20	0.203	0.172	1.23	0.234	0.500
C2402-06-06	3/8	9/16-18	9/16-18	0.281	0.297	1.28	0.250	0.625
C2402-08-08	1/2	3/4-16	3/4-16	0.422	0.391	1.47	0.305	0.812
C2402-08-12	1/2	3/4-16	1-1/16-12	0.422	0.609	1.68	0.305	1.125
C2402-12-12	3/4	1-1/16-12	1-1/16-12	0.656	0.609	1.94	0.350	1.125
C2402-16-16	1	1-5/16-12	1-5/16-12	0.875	0.844	1.98	0.415	1.375
C2402-20-20	1-1/4	1-5/8-12	1-5/8-12	1.093	1.078	2.11	0.415	1.688

## BT-BT Tube Union Straight | C2403 Series

SAE# 080101 / MS# 51814

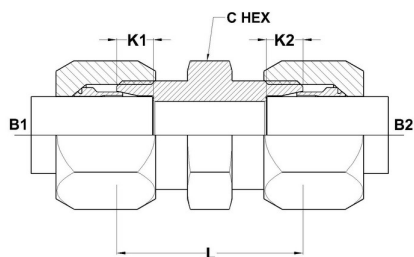


PART NO. SIZE	TUBE	B1	B2	B1	B2	L	K1	K2	C
	O.D.	THREAD	THREAD	DRILL	DRILL	LGTH	DEPTH	DEPTH	HEX
C2403-02-02	1/8	5/16-24	5/16-24	0.093	0.093	1.02	0.188	0.188	0.438
C2403-03-03	3/16	3/8-24	3/8-24	0.125	0.125	1.11	0.234	0.234	0.438
C2403-04-04	1/4	7/16-20	7/16-20	0.203	0.203	1.18	0.234	0.234	0.500
C2403-05-05	5/16	1/2-20.	1/2-20.	0.234	0.234	1.18	0.250	0.250	0.562
C2403-06-04	3/8 1/4	9/16-18	7/16-18	0.281	0.203	1.22	0.250	0.234	0.625
C2403-06-06	3/8	9/16-18	9/16-18	0.281	0.281	1.24	0.250	0.250	0.625
C2403-08-08	1/2	3/4-16	3/4-16	0.422	0.422	1.42	0.305	0.305	0.812
C2403-10-10	5/8	7/8-14	7/8-14	0.500	0.500	1.61	0.350	0.350	0.937

C2403-12-08	3/4 1/2	1-1/16-12	1/2-14	0.656	0.422	1.69	0.350	0.305	1.125
C2403-12-12	3/4	1-1/16-12	1-1/16-12	0.656	0.656	1.81	0.350	0.350	1.125
C2403-14-14	7/8	1-3/16-12	1-3/16-12	0.719	0.719	1.81	0.350	0.350	1.250
C2403-16-16	1	1-5/16-12	1-5/16-12	0.875	0.875	1.81	0.415	0.415	1.375
C2403-20-20	1-1/4	1-5/8-12	1-5/8-12	1.093	1.093	1.89	0.415	0.415	1.688
C2403-24-24	1-1/2	1-7/8-12	1-7/8-12	1.344	1.344	1.96	0.485	0.485	2.000
C2403-32-32	2	2-1/2-12	2-1/2-12	1.813	1.813	2.11	0.485	0.485	2.625

## BT-BT Tube Union Large Hex Straight | C2403-LH Series

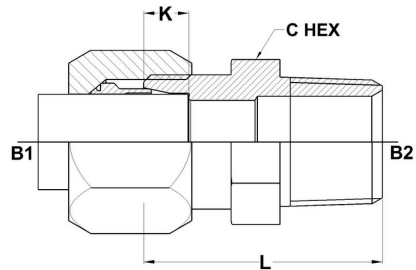
SAE# 080119 / MS# 51856



PART NO.SIZE	TUBE O.D.	B1 THREAD	B2 THREAD	B1 DRILL	B2 DRILL	L LGTH	K1 DEPTH	K2 DEPTH	C HEX
C2403-LH-04-04	1/4	7/16-20	7/16-20	0.203	0.203	1.18	0.234	0.234	0.688
C2403-LH-06-06	3/8	9/16-18	9/16-18	0.281	0.281	1.24	0.250	0.250	0.812
C2403-LH-08-06	1/2 3/8	3/4-16	9/16-18	0.422	0.281	1.33	0.305	0.250	1.000
C2403-LH-08-08	1/2	3/4-16	3/4-16	0.422	0.422	1.42	0.305	0.305	1.000
C2403-LH-10-10	5/8	7/8-14	7/8-14	0.500	0.500	1.61	0.350	0.350	1.125
C2403-LH-12-12	3/4	1-1/16-12	1-1/16-12	0.656	0.656	1.81	0.350	0.350	1.375
C2403-LH-16-16	1	1-5/16-12	1-5/16-12	0.875	0.875	1.81	0.415	0.415	1.625

## BT-MP Adapter Straight | C2404 Series

SAE# 080102 / MS# 51819



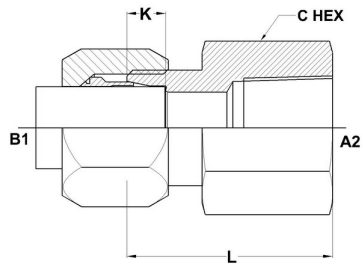
PART NO. SIZE	TUBE O.D.	B1 THREAD	B2 NPTF	B1 DRILL	B2 DRILL	L LGTH	K DEPTH	C HEX
C2404-02-02	1/8	5/16-24	1/8-27	0.093	0.188	1.04	0.188	0.438
C2404-02-04	1/8	5/16-24	1/4-18	0.093	0.281	1.24	0.188	0.625
C2404-03-02	3/16	3/8-24	1/8-27	0.125	0.188	1.09	0.234	0.438
C2404-04-02	1/4	7/16-20	1/8-27	0.203	0.188	1.12	0.234	0.500
C2404-04-04	1/4	7/16-20	1/4-18	0.203	0.281	1.32	0.234	0.625
C2404-04-06	1/4	7/16-20	3/8-18	0.203	0.406	1.33	0.234	0.812
C2404-04-08	1/4	7/16-20	1/2-14	0.203	0.531	1.58	0.234	0.937
C2404-05-02	5/16	1/2-20	1/8-27	0.234	0.188	1.12	0.250	0.562
C2404-05-04	5/16	1/2-20	1/4-18	0.234	0.281	1.32	0.250	0.625

C2404-05-06	5/16	1/2-20	3/8-18	0.234	0.406	1.33	0.250	0.812
C2404-06-02	3/8	9/16-18	1/8-27	0.281	0.188	1.15	0.250	0.625
C2404-06-04	3/8	9/16-18	1/4-18	0.281	0.281	1.34	0.250	0.625
C2404-06-06	3/8	9/16-18	3/8-18	0.281	0.406	1.35	0.250	0.812
C2404-06-08	3/8	9/16-18	1/2-14	0.281	0.531	1.60	0.250	0.937
C2404-08-04	1/2	3/4-16	1/4-18	0.422	0.281	1.44	0.305	0.812
C2404-08-06	1/2	3/4-16	3/8-18	0.422	0.406	1.44	0.305	0.812
C2404-08-08	1/2	3/4-16	1/2-14	0.422	0.531	1.69	0.305	0.937
C2404-08-12	1/2	3/4-16	3/4-14	0.422	0.719	1.76	0.305	1.125
C2404-10-06	5/8	7/8-14	3/8-18	0.500	0.406	1.56	0.350	0.937
C2404-10-08	5/8	7/8-14	1/2-14	0.500	0.531	1.75	0.350	0.937
C2404-10-12	5/8	7/8-14	3/4-14	0.500	0.719	1.82	0.350	1.125
C2404-12-08	3/4	1-1/16-12	1/2-14	0.656	0.531	1.88	0.350	1.125
C2404-12-12	3/4	1-1/16-12	3/4-14	0.656	0.719	1.88	0.350	1.125
C2404-12-16	3/4	1-1/16-12	1-11 1/2	0.656	0.938	2.07	0.350	1.375
C2404-14-12	7/8	1-3/16-12	3/4-14	0.719	0.719	1.88	0.350	1.250
C2404-16-12	1	1-5/16-12	3/4-14	0.875	0.719	1.88	0.415	1.375
C2404-16-16	1	1-5/16-12	1-11 1/2	0.875	0.938	2.07	0.415	1.375
C2404-20-20	1-1/4	1-5/8-12	1-1/4-11 1/2	1.093	1.250	2.18	0.415	1.688
C2404-24-20	1-1/2	1-7/8-12	1-1/4-11 1/2	1.344	1.250	2.25	0.485	2.000

C2404-24-24	1-1/2	1-7/8-12	1-1/2-11 1/2	1.344	1.500	2.28	0.485	2.000
C2404-32-32	2	2-1/2-12	2-11 1/2	1.813	1.938	2.46	0.485	2.625

## BT-FP Adapter Straight | C2405 Series

SAE# 080103

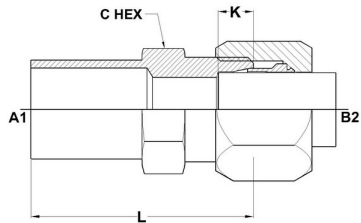


PART NO. SIZE	TUBE O.D.	B1 THREAD	A2 NPTF	B1 DRILL	L LGTH	K DEPTH	C HEX
C2405-02-02	1/8	5/16-24	1/8-27	0.093	1.05	0.188	0.562
C2405-04-02	1/4	7/16-20	1/8-27	0.203	1.09	0.234	0.562
C2405-04-04	1/4	7/16-20	1/4-18	0.203	1.30	0.234	0.750
C2405-05-02	5/16	1/2-20	1/8-27	0.234	1.08	0.250	0.562
C2405-05-04	5/16	1/2-20	1/4-18	0.234	1.30	0.250	0.750
C2405-06-04	3/8	9/16-18	1/4-18	0.281	1.31	0.250	0.750
C2405-06-06	3/8	9/16-18	3/8-18	0.281	1.36	0.250	0.875
C2405-06-08	3/8	9/16-18	1/2-14	0.281	1.53	0.250	1.125

C2405-08-04	1/2	3/4-16	1/4-18	0.422	1.46	0.305	0.875
C2405-08-06	1/2	3/4-16	3/8-18	0.422	1.47	0.305	0.875
C2405-08-08	1/2	3/4-16	1/2-14	0.422	1.64	0.305	1.125
C2405-10-06	5/8	7/8-14	3/8-18	0.500	1.54	0.350	1.125
C2405-10-08	5/8	7/8-14	1/2-14	0.500	1.76	0.350	1.125
C2405-12-12	3/4	1-1/16-12	3/4-14	0.656	1.89	0.350	1.375
C2405-14-12	7/8	1-3/16-12	3/4-14	0.719	1.86	0.350	1.375
C2405-16-16	1	1-5/16-12	1-11-1/2	0.875	2.13	0.415	1.625
C2405-20-20	1-1/4	1-5/8-12	1-1/4-11-1/2	1.093	2.22	0.415	2.000
C2405-24-24	1-1/2	1-7/8-12	1-1/2-11-1/2	1.344	2.23	0.485	2.375

## Tube-BT Reducer | C2406 Series

SAE# 080123

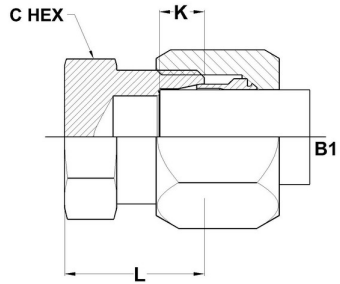


PART NO. SIZE	A1 TUBE O.D.	A1 TUBE	B2 TUBE	B2 THREAD	A1 DRILL	B2 DRILL	L LGTH	K DEPTH	C HEX
C2406-06-04	3/8	0.375	1/4	7/16-20	0.250	0.203	1.61	0.234	0.500
C2406-08-04	1/2	0.500	1/4	7/16-20	0.375	0.203	1.73	0.234	0.562
C2406-08-06	1/2	0.500	3/8	9/16-18	0.375	0.281	1.77	0.250	0.625
C2406-10-08	5/8	0.625	1/2	3/4-16	0.500	0.422	1.96	0.305	0.812
C2406-12-06	3/4	0.750	3/8	9/16-18	0.625	0.281	1.93	0.250	0.812
C2406-12-08	3/4	0.750	1/2	3/4-16	0.625	0.422	2.03	0.305	0.812
C2406-16-08	1	1.000	1/2	3/4-16	0.844	0.422	2.05	0.305	1.062
C2406-16-12	1	1.000	3/4	1-1/16-12	0.844	0.656	2.24	0.350	1.125

C2406-20-16	1-1/4	1.250	1	1-5/16-12	1.031	0.875	2.28	0.415	1.375
-------------	-------	-------	---	-----------	-------	-------	------	-------	-------

## Plug BT | C2408 Series

SAE# 080109



PART NO.SIZE	TUBE O.D.	B1 THREAD	B1 DRILL	L LGTH	K DEPTH	C HEX
C2408-02	1/8	5/16-24	0.093	0.63	0.188	0.438
C2408-04	1/4	7/16-20	0.203	0.71	0.234	0.500
C2408-06	3/8	9/16-18	0.281	0.75	0.250	0.625
C2408-08	1/2	3/4-16	0.422	0.85	0.305	0.812
C2408-10	5/8	7/8-14	0.500	0.97	0.350	0.938
C2408-12	3/4	1-1/16-12	0.656	1.10	0.350	1.125
C2408-16	1	1-5/16-12	0.875	1.10	0.415	1.375
C2408-20	1-1/4	1-5/8-12	1.093	1.18	0.415	1.688

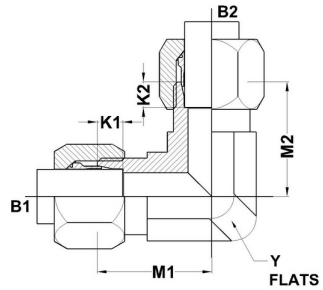


**HYDROMATIK**  
connections par excellence

## Flareless Bite Type Fittings

### BT-BT Elbow 90° | C2500 Series

SAE# 080201 / MS#51820

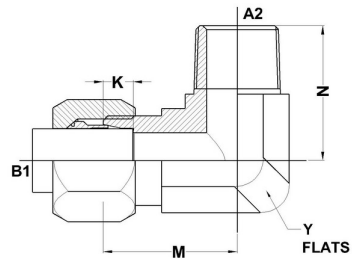


PART NO. SIZE	TUBE O.D.	B1 THREAD	B2 THREAD	B1 DRILL	B2 DRILL	M1 LGTH	M2 LGTH	K1 DEPTH	K2 DEPTH	Y FLATS
C2500-02-02-FG	1/8	5/16-24	5/16-24	0.093	0.093	0.77	0.77	0.188	0.188	0.438
C2500-04-04-FG	1/4	7/16-20	7/16-20	0.203	0.203	0.89	0.89	0.234	0.234	0.438
C2500-05-05-FG	5/16	1/2-20	1/2-20	0.234	0.234	0.95	0.95	0.250	0.250	0.562
C2500-06-06-FG	3/8	9/16-18	9/16-18	0.281	0.281	1.05	1.05	0.250	0.250	0.562
C2500-08-08-FG	1/2	3/4-16	3/4-16	0.422	0.422	1.25	1.25	0.305	0.305	0.750
C2500-10-10-FG	5/8	7/8-14	7/8-14	0.500	0.500	1.42	1.42	0.350	0.350	0.875
C2500-12-12-FG	3/4	1-1/16-12	1-1/16-12	0.656	0.656	1.58	1.58	0.350	0.350	1.062
C2500-16-16-FG	1	1-5/16-12	1-5/16-12	0.875	0.875	1.73	1.73	0.415	0.415	1.312

C2500-20-20-FG	1-1/4	1-5/8-12	1-5/8-12	1.093	1.093	1.89	1.89	0.415	0.415	1.625
C2500-24-24-FG	1-1/2	1-7/8-12	1-7/8-12	1.344	1.344	2.02	2.02	0.485	0.485	1.875

## BT-MP-Elbow 90° | C2501 Series

SAE# 080202 / MS#51815

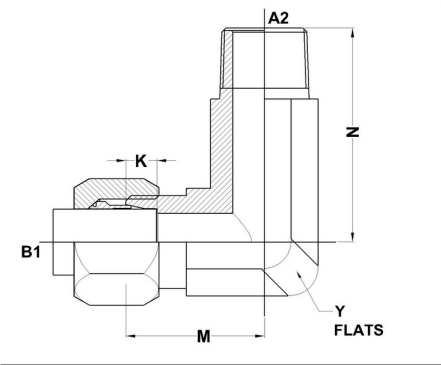


PART NO.SIZE	TUBE O.D.	B1 THREAD	A2 NPTF	B1 DRILL	A2 DRILL	M LGTH	N LGTH	K DEPTH	Y FLATS
C2501-02-02-FG	1/8	5/16-24	1/8-27	0.093	0.188	0.77	0.72	0.188	0.438
C2501-03-02-FG	3/16	3/8-24	1/8-27	0.125	0.188	0.83	0.72	0.234	0.438
C2501-04-02-FG	1/4	7/16-20	1/8-27	0.203	0.188	0.89	0.78	0.234	0.438
C2501-04-04-FG	1/4	7/16-20	1/4-18	0.203	0.281	1.03	1.09	0.234	0.562
C2501-04-06-FG	1/4	7/16-20	3/8-18	0.203	0.406	1.12	1.22	0.234	0.750
C2501-04-08-FG	1/4	7/16-20	1/2-14	0.203	0.531	1.22	1.47	0.234	0.875
C2501-05-02-FG	5/16	1/2-20	1/8-27	0.234	0.188	0.95	0.81	0.250	0.562
C2501-05-04-FG	5/16	1/2-20	1/4-18	0.234	0.281	1.03	1.09	0.250	0.562
C2501-06-02-FG	3/8	9/16-18	1/8-27	0.281	0.188	1.05	0.90	0.250	0.562

C2501-06-04-FG	3/8	9/16-18	1/4-18	0.281	0.281	1.05	1.09	0.250	0.562
C2501-06-06-FG	3/8	9/16-18	3/8-18	0.281	0.406	1.14	1.22	0.250	0.750
C2501-06-08-FG	3/8	9/16-18	1/2-14	0.281	0.531	1.24	1.47	0.250	0.875
C2501-08-04-FG	1/2	3/4-16	1/4-18	0.422	0.281	1.25	1.22	0.305	0.750
C2501-08-06-FG	1/2	3/4-16	3/8-18	0.422	0.406	1.25	1.22	0.305	0.750
C2501-08-08-FG	1/2	3/4-16	1/2-14	0.422	0.531	1.35	1.47	0.305	0.875
C2501-08-12-FG	1/2	3/4-16	3/4-14	0.422	0.719	1.43	1.59	0.305	1.06
C2501-10-06-FG	5/8	7/8-14	3/8-18	0.500	0.406	1.42	1.28	0.350	0.875
C2501-10-08-FG	5/8	7/8-14	1/2-14	0.500	0.531	1.42	1.47	0.350	0.875
C2501-10-12-FG	5/8	7/8-14	3/4-14	0.500	0.719	1.50	1.59	0.350	1.062
C2501-12-08-FG	3/4	1-1/16-12	1/2-14	0.656	0.531	1.58	1.59	0.350	1.062
C2501-12-12-FG	3/4	1-1/16-12	3/4-14	0.656	0.719	1.58	1.59	0.350	1.062
C2501-16-12-FG	1	1-5/16-12	3/4-14	0.875	0.719	1.73	1.78	0.415	1.312
C2501-16-16-FG	1	1-5/16-12	1-11 1/2	0.875	0.938	1.73	1.97	0.415	1.312
C2501-20-20-FG	1-1/4	1-5/8-12	1-1/4-11 1/2	1.093	1.250	1.89	2.38	0.415	1.625
C2501-24-24-FG	1-1/2	1-7/8-12	1-1/2-11 1/2	1.344	1.500	2.02	2.64	0.485	1.875
C2501-32-32-FG	2	2-1/2-12	2-11 1/2	1.813	1.938	2.45	3.00	0.485	2.500

## BT-MP Elbow 90° Long | C2501-L Series

SAE# 071502

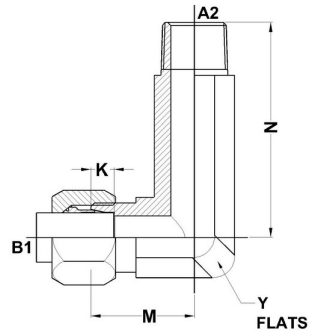


PART NO. SIZE	TUBE O.D.	B1 THREAD	A2 NPTF	B1 DRILL	A2 DRILL	M LGTH	N LGTH	K DEPTH	Y FLATS
C2501-L-04-02-FG	1/4	7/16-20	1/8-27	0.203	0.188	0.89	1.17	0.234	0.438
C2501-L-04-04-FG	1/4	7/16-20	1/4-18	0.203	0.281	1.03	1.58	0.234	0.562
C2501-L-05-04-FG	5/16	1/2-20	1/4-18	0.234	0.281	0.95	1.58	0.250	0.562
C2501-L-06-06-FG	3/8	9/16-18	3/8-18	0.281	0.406	1.14	1.82	0.250	0.750
C2501-L-12-12-FG	3/4	1-1/16-12	3/4-14	0.656	0.719	1.58	2.44	0.350	1.062
C2501-L-16-16-FG	1	1-5/16-12	1-11 1/2	0.875	0.938	1.73	3.01	0.415	1.312
C2501-L-20-20-FG	1-1/4	1-5/8-12	1-1/4-11 1/2	1.093	1.250	1.89	3.69	0.415	1.625
C2501-L-24-24-FG	1-1/2	1-7/8-12	1-1/2-11 1/2	1.344	1.500	2.02	4.10	0.485	1.875

C2501-L-32-32-FG	2	2-1/2-12	2-11 1/2	1.813	1.938	2.45	4.81	0.485	2.500
------------------	---	----------	----------	-------	-------	------	------	-------	-------

## BT-MP Elbow 90° X-Long | C2501-LL Series

SAE# 081602



PART NO. SIZE	TUBE O.D.	B1 THREAD	A2 NPTF	B1 DRILL	A2 DRILL	M LGTH	N LGTH	K DEPTH	Y FLATS <sub>t</sub>
C2501-LL-04-02-FG	1/4	7/16-20	1/8-27	0.203	0.188	0.89	1.56	0.234	0.438
C2501-LL-04-04-FG	1/4	7/16-20	1/4-18	0.203	0.281	1.03	2.07	0.234	0.562
C2501-LL-05-02-FG	5/16	1/2-20	1/8-27	0.234	0.188	0.95	1.63	0.250	0.562
C2501-LL-06-04-FG	3/8	9/16-18	1/4-18	0.281	0.281	1.05	2.07	0.250	0.562
C2501-LL-08-06-FG	1/2	3/4-16	3/8-18	0.422	0.406	1.25	2.42	0.305	0.750
C2501-LL-10-08-FG	5/8	7/8-14	1/2-14	0.500	0.531	1.42	2.87	0.350	0.875
C2501-LL-12-12-FG	3/4	1-1/16-12	3/4-14	0.656	0.719	1.58	3.28	0.350	1.062
C2501-LL-16-16-FG	1	1-5/16-12	1-11 1/2	0.875	0.938	1.73	4.05	0.415	1.312

C2501-LL-20-20-FG	1-1/4	1-5/8-12	1-1/4-11 1/2	1.093	1.250	1.89	5.00	0.415	1.625
C2501-LL-24-24-FG	1-1/2	1-7/8-12	1-1/2-11 1/2	1.344	1.500	2.02	5.55	0.485	1.875
C2501-LL-32-32-FG	2	2-1/2-12	2-11 1/2	1.813	1.938	2.45	6.63	0.485	2.500

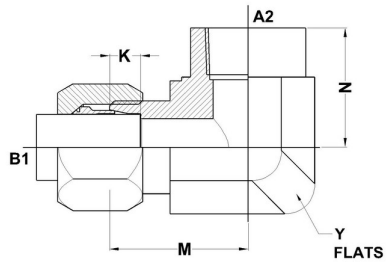


**HYDROMATIK**  
connections par excellence

## Flareless Bite Type Fittings

### BT-FP Elbow 90° | C2502 Series

SAE# 080203 / MS# 51813

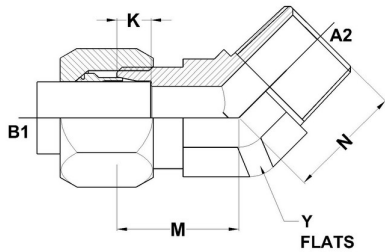


PART NO.SIZE	TUBE O.D.	B1 THREAD	A2 NPTF	B1 DRILL	M LGTH	N LGTH	K DEPTH	Y FLATS
C2502-04-02-FG	1/4	7/16-20	1/8-27	0.203	0.89	0.66	0.234	0.562
C2502-04-04-FG	1/4	7/16-20	1/4-18	0.203	1.03	0.88	0.234	0.750
C2502-05-02-FG	5/16	1/2-20	1/8-27	0.234	0.95	0.66	0.250	0.562
C2502-06-04-FG	3/8	9/16-18	1/4-18	0.281	1.05	0.88	0.250	0.750
C2502-06-06-FG	3/8	9/16-18	3/8-18	0.281	1.12	1.02	0.250	0.875
C2502-08-04-FG	1/2	3/4-16	1/4-18	0.422	1.23	1.02	0.305	0.875
C2502-08-06-FG	1/2	3/4-16	3/8-18	0.422	1.23	1.02	0.305	0.875
C2502-08-08-FG	1/2	3/4-16	1/2-14	0.422	1.35	1.23	0.305	1.062
C2502-10-08-FG	5/8	7/8-14	1/2-14	0.500	1.42	1.23	0.350	1.062

C2502-12-12-FG	3/4	1-1/16-12	3/4-14	0.656	1.58	1.36	0.350	1.312
C2502-16-16-FG	1	1-5/16-12	1-11 1/2	0.875	1.73	1.62	0.415	1.625
C2502-20-20-FG	1-1/4	1-5/8-12	1-1/4-11 1/2	1.093	2.08	1.70	0.415	1.875
C2502-24-24-FG	1-1/2	1-7/8-12	1-1/2-11 1/2	1.344	2.58	2.08	0.485	2.562

## BT-MP Elbow 45° | C2503 Series

SAE# 080302 / MS# 51817



PART NO. SIZE	TUBE O.D.	B1 THREAD	A2 NPTF	B1 DRILL	A2 DRILL	M LGTH	N LGTH	K DEPTH	Y FLATS
C2503-04-02-FG	1/4	7/16-20	1/8-27	0.203	0.188	0.70	0.64	0.234	0.438
C2503-04-04-FG	1/4	7/16-20	1/4-18	0.203	0.281	0.81	0.86	0.234	0.562
C2503-06-04-FG	3/8	9/16-18	1/4-18	0.281	0.281	0.83	0.86	0.250	0.562
C2503-06-06-FG	3/8	9/16-18	3/8-18	0.281	0.406	0.87	0.95	0.250	0.750
C2503-06-08-FG	3/8	9/16-18	1/2-14	0.281	0.531	0.90	1.17	0.250	0.875
C2503-08-06-FG	1/2	3/4-16	3/8-18	0.422	0.406	0.98	0.95	0.305	0.750
C2503-08-08-FG	1/2	3/4-16	1/2-14	0.422	0.531	1.01	1.17	0.305	0.875
C2503-08-12-FG	1/2	3/4-16	3/4-14	0.422	0.719	1.12	1.20	0.305	1.062

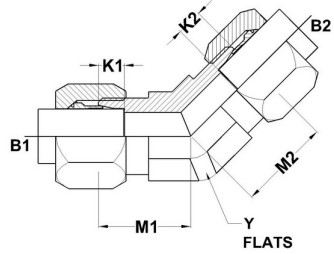
C2503-10-06-FG	5/8	7/8-14	3/8-18	0.500	0.406	1.08	0.98	0.350	0.875
C2503-10-08-FG	5/8	7/8-14	1/2-14	0.500	0.531	1.08	1.17	0.350	0.875
C2503-12-08-FG	3/4	1-1/16-12	1/2-14	0.656	0.531	1.27	1.20	0.350	1.062
C2503-12-12-FG	3/4	1-1/16-12	3/4-14	0.656	0.719	1.27	1.20	0.350	1.062
C2503-16-16-FG	1	1-5/16-12	1-11 1/2	0.875	0.938	1.36	1.48	0.415	1.312
C2503-20-20-FG	1-1/4	1-5/8-12	1-1/4-11 1/2	1.093	1.250	1.45	1.67	0.415	1.625



**HYDROMATIK**  
connections par excellence

## Flareless Bite Type Fittings

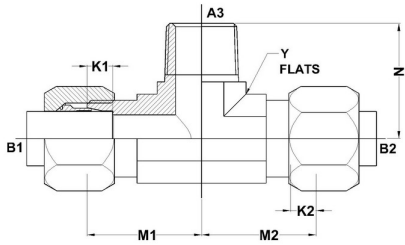
### BT-BT Elbow 45° | C2504 Series



PART NO. SIZE	TUBE O.D.	B1 THREAD	B2 THREAD	B1 DRILL	B2 DRILL	M1 LGTH	M2 LGTH	K1 DEPTH	K2 DEPTH	Y FLATS
C2504-12-12-FG	3/4	1-1/16-12	1-1/16-12	0.656	0.656	1.27	1.27	0.350	0.350	1.062
C2504-16-16-FG	1	1-5/16-12	1-5/16-12	0.875	0.875	1.36	1.36	0.415	0.415	1.312
C2504-20-20-FG	1-1/4	1-5/8-12	1-5/8-12	1.093	1.093	1.45	1.45	0.415	0.415	1.625

## BT-BT-MP Tee | C2601 Series

SAE# 080425 / MS#51818

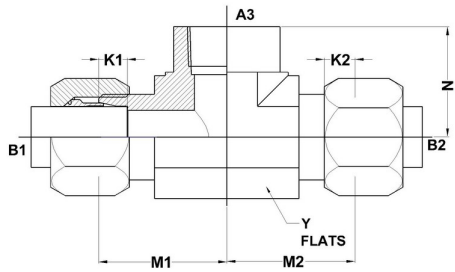


PART NO. SIZE	TUBE O.D.	B1 THREAD	B2 THREAD	A3 NPTF	B1 DRILL	B2 DRILL	A3 DRILL	M1 LGTH	M2 LGTH	N LGTH	K1 DEPTH	K2 DEPTH	Y FLATS
C2601-02-02-02-FG	1/8	5/16-24	5/16-24	1/8-27	0.093	0.093	0.188	0.77	0.77	0.72	0.188	0.188	0.438
C2601-04-04-02-FG	1/4	7/16-20	7/16-20	1/8-27	0.203	0.203	0.188	0.89	0.89	0.78	0.234	0.234	0.438
C2601-04-04-04-FG	1/4	7/16-20	7/16-20	1/4-18	0.203	0.203	0.281	1.03	1.03	1.09	0.234	0.234	0.562
C2601-05-05-02-FG	5/16	1/2-20	1/2-20	1/8-27	0.234	0.234	0.188	0.95	0.95	0.81	0.250	0.250	0.562
C2601-06-06-04-FG	3/8	9/16-18	9/16-18	1/4-18	0.281	0.281	0.281	1.05	1.05	1.09	0.250	0.250	0.562
C2601-06-06-06-FG	3/8	9/16-18	9/16-18	3/8-18	0.281	0.281	0.406	1.14	1.14	1.22	0.250	0.250	0.750
C2601-08-08-06-FG	1/2	3/4-16	3/4-16	3/8-18	0.422	0.422	0.406	1.25	1.25	1.22	0.305	0.305	0.750
C2601-08-08-08-FG	1/2	3/4-16	3/4-16	1/2-14	0.422	0.422	0.531	1.35	1.35	1.47	0.305	0.305	0.875

C2601-10-10-08-FG	5/8	7/8-14	7/8-14	1/2-14	0.500	0.500	0.531	1.42	1.42	1.47	0.350	0.350	0.875
C2601-12-12-12-FG	3/4	1-1/16-12	1-1/16-12	3/4-14	0.656	0.656	0.719	1.58	1.58	1.59	0.350	0.350	1.062
C2601-16-16-16-FG	1	1-5/16-12	1-5/16-12	1-11 1/2	0.875	0.875	0.938	1.73	1.73	1.97	0.415	0.415	1.312

## BT-BT-FP-Tee | C2602 Series

SAE# 080427 / MS#51821

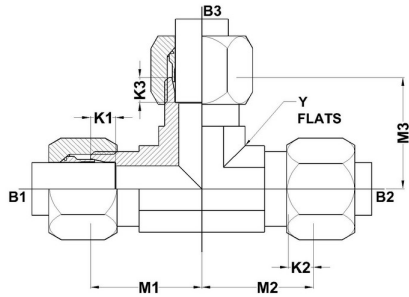


PART NO.SIZE	TUBE O.D.	B1 THREAD	B2 THREAD	A3 NPTF	B1 DRILL	B2 DRILL	M1 LGTH	M2 LGTH	N LGTH	K1 DEPTH	K2 DEPTH	Y FLATS
C2602-04-04-02-FG	1/4	7/16-20	7/16-20	1/8-27	0.203	0.203	0.89	0.89	0.66	0.234	0.234	0.562
C2602-04-04-04-FG	1/4	7/16-20	7/16-20	1/4-18	0.203	0.203	1.03	1.03	0.88	0.234	0.234	0.750
C2602-06-06-04-FG	3/8	9/16-18	9/16-18	1/4-18	0.281	0.281	1.05	1.05	0.88	0.250	0.250	0.750
C2602-08-08-06-FG	1/2	3/4-16	3/4-16	3/8-18	0.422	0.422	1.23	1.23	1.02	0.305	0.305	0.875
C2602-08-08-08-FG	1/2	3/4-16	3/4-16	3/4-16	0.422	0.422	1.35	1.35	1.23	0.305	0.305	1.062
C2602-10-10-08-FG	5/8	7/8-14	7/8-14	1/2-14	0.500	0.500	1.42	1.42	1.23	0.350	0.350	1.062
C2602-12-12-12-FG	3/4	1-1/16-12	1-1/16-12	3/4-14	0.656	0.656	1.58	1.58	1.36	0.350	0.350	1.312
C2602-16-16-16-FG	1	1-5/16-12	1-5/16-12	1-11/2	0.875	0.875	1.73	1.73	1.62	0.415	0.415	1.625

C2602-20-20-20-FG	1-1/4	1-5/8-12	1-5/8-12	1-1/4-11 1/2	1.093	1.093	2.08	2.08	1.70	0.415	0.415	1.875
-------------------	-------	----------	----------	-----------------	-------	-------	------	------	------	-------	-------	-------

## BT-BT-BT Tee | C2603 Series

SAE# 080401 / MS#51811

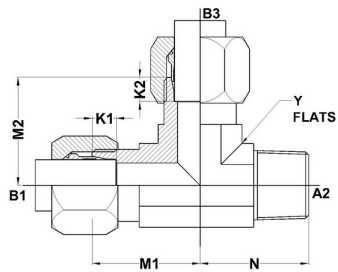


PART NO. SIZE	TUBE O.D.	B1 THREAD	B2 THREAD	B3 THREAD	B1 DRILL	B2 DRILL	B3 DRILL	M1 LGTH	M2 LGTH	M3 LGTH	K1 DEPTH	K2 DEPTH	K3 DEPTH	Y FLATS
C2603-02-02-02-FG	1/8	5/16-24	5/16-24	5/16-24	0.093	0.093	0.093	0.77	0.77	0.77	0.188	0.188	0.188	0.438
C2603-03-03-03-FG	3/16	3/8-24	3/8-24	3/8-24	0.125	0.125	0.125	0.83	0.83	0.83	0.234	0.234	0.234	0.438
C2603-04-04-04-FG	1/4	7/16-20	7/16-20	7/16-20	0.203	0.203	0.203	0.89	0.89	0.89	0.234	0.234	0.234	0.438
C2603-05-05-05-FG	5/16	1/2-20	1/2-20	1/2-20	0.234	0.234	0.234	0.95	0.95	0.95	0.250	0.250	0.250	0.562
C2603-06-06-06-FG	3/8	9/16-18	9/16-18	9/16-18	0.281	0.281	0.281	1.05	1.05	1.05	0.250	0.250	0.250	0.562
C2603-08-08-08-FG	1/2	3/4-16	3/4-16	3/4-16	0.422	0.422	0.422	1.25	1.25	1.25	0.305	0.305	0.305	0.750
C2603-10-10-10-FG	5/8	7/8-14	7/8-14	7/8-14	0.500	0.500	0.500	1.42	1.42	1.42	0.350	0.350	0.350	0.875
C2603-12-12-12-FG	3/4	1-1/16-12	1-1/16-12	1-1/16-12	0.656	0.656	0.656	1.58	1.58	1.58	0.350	0.350	0.350	1.062

C2603-14-14-14-FG	7/8	1-3/16-12	1-3/16-12	1-3/16-12	0.719	0.719	0.719	1.66	1.66	1.66	0.350	0.350	0.350	1.312
C2603-16-16-16-FG	1	1-5/16-12	1-5/16-12	1-5/16-12	0.875	0.875	0.875	1.73	1.73	1.73	0.415	0.415	0.415	1.312
C2603-20-20-16-FG	1-1/4	1-5/8-12	1-5/8-12	1-5/16-12	1.093	1.093	0.875	1.89	1.89	1.89	0.415	0.415	0.415	1.625
C2603-20-20-20-FG	1-1/4	1-5/8-12	1-5/8-12	1-5/8-12	1.093	1.093	1.093	1.89	1.89	1.89	0.415	0.415	0.415	1.625
C2603-24-24-24-FG	1-1/2	1-7/8-12	1-7/8-12	1-7/8-12	1.344	1.344	1.344	2.02	2.02	2.02	0.485	0.485	0.485	1.875
C2603-32-32-32-FG	2	2-1/2-12	2-1/2-12	2-1/2-12	1.813	1.813	1.813	2.45	2.45	2.45	0.485	0.485	0.485	2.500

## BT-MP-BT Tee | C2605 Series

SAE# 080424 / MS#51824



PART NO. SIZE	TUBE O.D.	B1 THREAD	A2 NPTF	B3 THREAD	B1 DRILL	A2 DRILL	B3 DRILL	M1 LGTH	N LGTH	M2 LGTH	K1 DEPTH	K2 DEPTH	Y FLATS
C2605-04-02-04-FG	1/4	7/16-20	1/8-27	7/16-20	0.203	0.188	0.203	0.89	0.78	0.89	0.234	0.234	0.438
C2605-04-04-04-FG	1/4	7/16-20	1/4-18	7/16-20	0.203	0.281	0.203	1.03	1.09	1.03	0.234	0.234	0.562
C2605-05-02-05-FG	5/16	1/2-20	1/8-27	1/2-20	0.234	0.188	0.234	0.95	0.81	0.95	0.250	0.250	0.562
C2605-06-04-06-FG	3/8	9/16-18	1/4-18	9/16-18	0.281	0.281	0.281	1.05	1.09	1.05	0.250	0.250	0.562
C2605-06-06-06-FG	3/8	9/16-18	3/8-18	9/16-18	0.281	0.406	0.281	1.14	1.22	1.14	0.250	0.250	0.750
C2605-06-06-08-FG	1/2	3/4-16	3/8-18	3/4-16	0.281	0.406	0.422	1.14	1.22	1.25	0.250	0.305	0.750
C2605-08-08-08-FG	1/2	3/4-16	1/2-14	3/4-16	0.422	0.531	0.422	1.35	1.47	1.35	0.305	0.305	0.875
C2605-10-08-10-FG	5/8	7/8-14	1/2-14	7/8-14	0.500	0.531	0.500	1.42	1.47	1.42	0.350	0.350	0.875

C2605-12-12-12-FG	3/4	1-1/16-12	3/4-14	1-1/16-12	0.656	0.719	0.656	1.58	1.59	1.58	0.350	0.350	1.062
C2605-16-16-16-FG	1	1-5/16-12	1-11 1/2	1-5/16-12	0.875	0.938	0.875	1.73	1.97	1.73	0.415	0.415	1.312

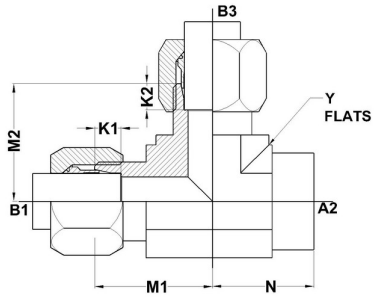


**HYDROMATIK**  
connections par excellence

## Flareless Bite Type Fittings

### BT-FP-BT Tee | C2606 Series

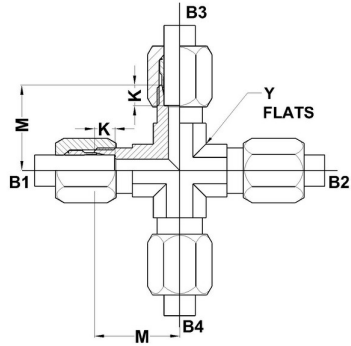
SAE# 080426 / MS#51822



PART NO. SIZE	TUBE O.D.	B1 THREAD	A2 NPTF	B3 THREAD	B1 DRILL	B3 DRILL	M1 LGTH	N LGTH	M2 LGTH	K1 DEPTH	K2 DEPTH	Y FLATS
C2606-04-02-04-FG	1/4	7/16-20	1/8-27	7/16-20	0.203	0.203	0.89	0.66	0.89	0.234	0.234	0.562
C2606-06-04-06-FG	3/8	9/16-18	1/4-18	9/16-18	0.281	0.281	1.05	0.88	1.05	0.250	0.250	0.750
C2606-08-06-08-FG	1/2	3/4-16	3/8-18	3/4-16	0.422	0.422	1.23	1.02	1.23	0.305	0.305	0.875
C2606-10-08-10-FG	5/8	7/8-14	1/2-14	7/8-14	0.500	0.500	1.42	1.23	1.42	0.350	0.350	1.062
C2606-12-12-12-FG	3/4	1-1/16-12	3/4-14	1-1/16-12	0.656	0.656	1.58	1.36	1.58	0.350	0.350	1.312
C2606-16-16-16-FG	1	1-5/16-12	1-11 1/2	1-5/16-12	0.875	0.875	1.73	1.62	1.73	0.415	0.415	1.625

## BT-BT-BT-BT Cross | C2650 Series

SAE# 080501 / MS#51894

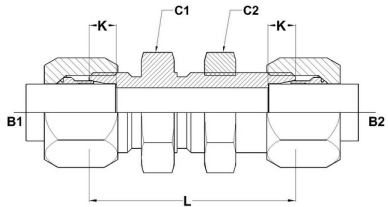


PART NO. SIZE	TUBE O.D.	B1 THREAD	B2 THREAD	B3 THREAD	B4 THREAD	B1 DRILL	M LGTH	K DEPTH	Y FLATS
C2650-04-04-04-04-FG	1/4	7/16-20	7/16-20	7/16-20	7/16-20	0.203	0.89	0.234	0.438
C2650-06-06-06-06-FG	3/8	9/16-18	9/16-18	9/16-18	9/16-18	0.281	1.05	0.250	0.562
C2650-08-08-08-08-FG	1/2	3/4-16	3/4-16	3/4-16	3/4-16	0.422	1.25	0.305	0.750
C2650-10-10-10-10-FG	5/8	7/8-14	7/8-14	7/8-14	7/8-14	0.500	1.42	0.350	0.875
C2650-16-16-16-16-FG	1	1-5/16-12	1-5/16-12	1-5/16-12	1-5/16-12	0.875	1.73	0.415	1.312
C2650-20-20-20-20-FG	1-1/4	1-5/8-12	1-5/8-12	1-5/8-12	1-5/8-12	1.093	1.89	0.415	1.625
C2650-24-24-24-24-FG	1-1/2	1-7/8-12	1-7/8-12	1-7/8-12	1-7/8-12	1.344	2.02	0.485	1.875
C2650-32-32-32-32-FG	2	2-1/2-12	2-1/2-12	2-1/2-12	2-1/2-12	1.813	2.45	0.485	2.500



## BT-BT Bulkhead Union | C2700 Series

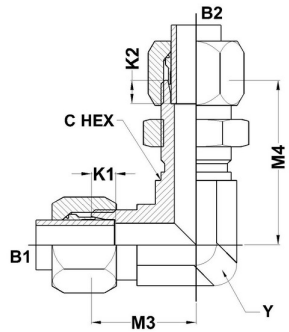
SAE# 080601



PART NO. SIZE	TUBE O.D.	B1 THREAD	B2 THREAD	B1 DRILL	B2 DRILL	K DEPTH	L LGTH	C1 HEX	C2 HEX
C2700-04-04	1/4	7/16-20	7/16-20	0.203	0.203	0.234	1.89	0.688	0.688
C2700-06-06	3/8	9/16-18	9/16-18	0.281	0.281	0.250	1.98	0.813	0.812
C2700-08-08	1/2	3/4-16	3/4-16	0.422	0.422	0.305	2.22	1.000	1.000
C2700-10-10	5/8	7/8-14	7/8-14	0.500	0.500	0.350	2.48	1.125	1.125
C2700-12-12	3/4	1-1/16-12	1-1/16-12	0.656	0.656	0.350	2.72	1.375	1.375
C2700-16-16	1	1-5/16-12	1-5/16-12	0.875	0.875	0.415	2.72	1.625	1.625

## BT-BT Bulkhead Union 90° | C2701 Series

SAE# 080701 / MS# 51855



PART NO. SIZE	TUBE O.D.	B1 THREAD	B2 THREAD	B1 DRILL	B2 DRILL	M3 LGTH	M4 LGTH	K1 DEPTH	K2 DEPTH	C HEX	Y FLATS
C2701-03-03-FG	3/16	3/8-24	3/8-24	0.125	0.125	0.94	1.44	0.234	0.234	0.625	0.438
C2701-04-04-FG	1/4	7/16-20	7/16-20	0.203	0.203	0.95	1.52	0.234	0.234	0.688	0.438
C2701-06-06-FG	3/8	9/16-18	9/16-18	0.281	0.281	1.08	1.70	0.250	0.250	0.813	0.562
C2701-08-08-FG	1/2	3/4-16	3/4-16	0.422	0.422	1.33	1.97	0.305	0.305	1.000	0.750
C2701-10-10-FG	5/8	7/8-14	7/8-14	0.500	0.500	1.52	2.27	0.350	0.350	1.125	0.875
C2701-12-12-FG	3/4	1-1/16-12	1-1/16-12	0.656	0.656	1.64	2.48	0.350	0.350	1.375	1.062
C2701-16-16-FG	1	1-5/16-12	1-5/16-12	0.875	0.875	1.73	2.61	0.415	0.415	1.625	1.312
C2701-20-20-FG	1-1/4	1-5/8-12	1-5/8-12	1.093	1.093	2.02	2.89	0.415	0.415	2.000	1.625



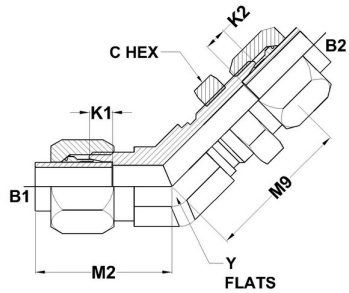


**HYDROMATIK**  
connections par excellence

## Flareless Bite Type Fittings

### BT-BT Bulkhead Union 45° | C2702 Series

SAE# 080801



PART NO. SIZE	TUBE O.D.	B1 THREAD	B2 THREAD	B1 DRILL	B2 DRILL	M2 LGTH	M9 LGTH	K1 DEPTH	K2 DEPTH	C HEX	Y FLATS
C2702-04-04-FG	1/4	7/16-20	7/16-20	0.203	0.203	0.70	1.45	0.234	0.234	0.688	0.438
C2702-06-06-FG	3/8	9/16-18	9/16-18	0.281	0.281	0.83	1.56	0.250	0.250	0.813	0.562
C2702-08-08-FG	1/2	3/4-16	3/4-16	0.422	0.422	0.98	1.81	0.305	0.305	1.000	0.750
C2702-12-12-FG	3/4	1-1/16-12	1-1/16-12	0.656	0.656	1.27	2.25	0.350	0.350	1.375	1.062

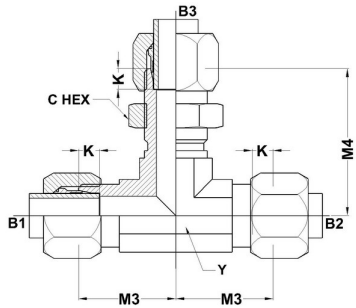


**HYDROMATIK**  
connections par excellence

## Flareless Bite Type Fittings

### BT-BT-BT Bulkhead Branch Tee | C2703 Series

SAE# 080959



PART NO. SIZE	TUBE O.D.	B1 THREAD	B2 THREAD	B3 THREAD	B1 DRILL	B2 DRILL	B3 DRILL	K DEPTH	M3 LGTH	M4 LGTH	C HEX	Y FLATS
C2703-04-04-04-FG	1/4	7/16-20	7/16-20	7/16-20	0.203	0.203	0.203	0.234	0.95	1.52	0.688	0.438
C2703-05-05-05-FG	5/16	1/2-20	1/2-20	1/2-20	0.234	0.234	0.234	0.250	1.05	1.66	0.750	0.562
C2703-06-06-06-FG	3/8	9/16-18	9/16-18	9/16-18	0.281	0.281	0.281	0.250	1.08	1.70	0.813	0.562
C2703-10-10-10-FG	1/2	7/8-14	7/8-14	7/8-14	0.500	0.500	0.500	0.350	1.52	2.27	1.125	0.875
C2703-12-12-12-FG	3/4	1-1/16-12	1-1/16-12	1-1/16-12	0.656	0.656	0.656	0.350	1.64	2.48	1.375	1.062

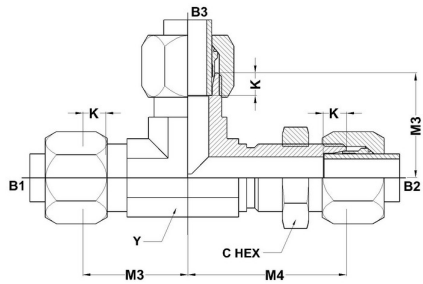


**HYDROMATIK**  
connections par excellence

## Flareless Bite Type Fittings

### BT-BT-BT Bulkhead Run Tee | C2704 Series

SAE# 080958



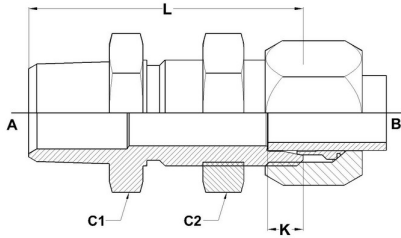
PART NO. SIZE	TUBE O.D.	B1 THREAD	B2 THREAD	B3 THREAD	B1 DRILL	B2 DRILL	B3 DRILL	K DEPTH	M3 LGTH	M4 LGTH	C HEX	Y FLATS
C2704-04-04-04-FG	1/4	7/16-20	7/16-20	7/16-20	0.203	0.203	0.203	0.234	0.95	1.52	0.688	0.438
C2704-06-06-06-FG	3/8	9/16-18	9/16-18	9/16-18	0.281	0.281	0.281	0.250	1.08	1.70	0.813	0.562
C2704-08-08-08-FG	1/2	3/4-16	3/4-16	3/4-16	0.422	0.422	0.422	0.305	1.33	1.97	1.000	0.750
C2704-12-12-12-FG	3/4	1-1/16-12	1-1/16-12	1-1/16-12	0.656	0.656	0.656	0.350	1.64	2.48	1.375	1.062



**HYDROMATIK**  
connections par excellence

## Flareless Bite Type Fittings

### MP-BT Bulkhead | C2706 Series



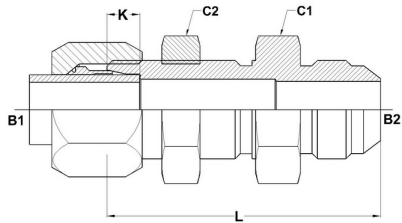
PART NO. SIZE	TUBE O.D.	A NPTF	B THREAD	A DRILL	B DRILL	L LGTH	K DEPTH	C1 HEX	C2 HEX
C2706-02-04	1/4	1/8-27	7/16-20	0.188	0.203	1.77	0.234	0.688	0.688
C2706-04-04	1/4	1/4-18	7/16-20	0.281	0.203	1.98	0.234	0.688	0.688
C2706-04-06	3/8	1/4-18	9/16-18	0.281	0.281	2.03	0.250	0.812	0.812
C2706-06-06	3/8	3/8-18	9/16-18	0.406	0.281	2.03	0.250	0.812	0.812
C2706-08-06	3/8	1/2-14	9/16-18	0.531	0.281	2.28	0.250	0.875	0.875
C2706-08-08	1/2	1/2-14	3/4-16	0.531	0.422	2.42	0.305	1.000	1.000
C2706-12-12	3/4	3/4-14	1-1/16-12	0.719	0.656	2.74	0.350	1.375	1.375
C2706-16-16	1	1-11-1/2	1-5/16-12	0.938	0.875	2.93	0.415	1.625	1.625



**HYDROMATIK**  
connections par excellence

## Flareless Bite Type Fittings

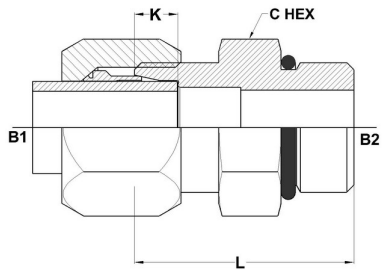
### BT-MJ Bulkhead | C2707 Series



PART NO.SIZE	TUBE O.D.	B1 THREAD	B2 THREAD	B1 DRILL	B2 DRILL	K DEPTH	L LGTH	C1 HEX	C2 HEX
C2702-04-04	1/4	7/16-20	7/16-20	0.203	0.172	0.234	1.94	0.688	0.688
C2702-06-06	3/8	9/16-18	9/16-18	0.281	0.297	0.250	2.08	0.812	0.812
C2702-08-08	1/2	3/4-16	3/4-16	0.422	0.391	0.305	2.31	1.000	1.000
C2702-12-12	3/4	1-1/16-12	1-1/16-12	0.656	0.609	0.350	2.94	1.375	1.375
C2702-16-16	1	1-5/16-12	1-5/16-12	0.875	0.844	0.415	2.95	1.625	1.625

## BT-MORB | C6400-O Series

SAE # 080120 /MS # 51843



PART NO.SIZE	TUBE O.D.	B1 THREAD	B2 THREAD	B1 DRILL	B2 DRILL	K DEPTH	L LGTH	C HEX
C6400-02-02-O	1/8	5/16-24	5/16-24	0.093	0.093	0.188	0.99	0.438
C6400-03-03-O	3/16	3/8-24	3/8-24	0.125	0.125	0.234	1.04	0.500
C6400-04-04-O	1/4	7/16-20	7/16-20	0.203	0.203	0.234	1.13	0.562
C6400-04-05-O	1/4 5/16	7/16-20	1/2-20	0.203	0.234	0.234	1.13	0.625
C6400-04-06-O	1/4 3/8	7/16-20	9/16-18	0.203	0.281	0.234	1.19	0.688
C6400-05-05-O	5/16	1/2-20	1/2-20	0.234	0.234	0.250	1.13	0.625
C6400-06-04-O	3/8 1/4	9/16-18	7/16-20	0.281	0.203	0.250	1.24	0.688
C6400-06-05-O	3/8 5/16	9/16-18	1/2-20	0.281	0.234	0.250	1.24	0.688
C6400-06-06-O	3/8	9/16-18	9/16-18	0.281	0.281	0.250	1.21	0.688

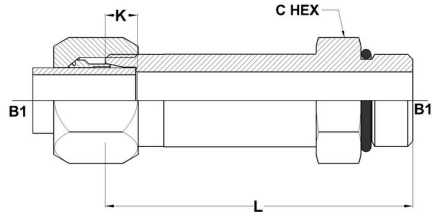
C6400-06-08-O	3/8 1/2	9/16-18	3/4-16	0.281	0.422	0.250	1.29	0.875
C6400-08-06-O	1/2 3/8	3/4-16	9/16-18	0.422	0.281	0.305	1.42	0.875
C6400-08-08-O	1/2	3/4-16	3/4-16	0.422	0.422	0.305	1.38	0.875
C6400-08-10-O	1/2 5/8	3/4-16	7/8-14	0.422	0.500	0.305	1.51	1.000
C6400-08-12-O	1/2 3/4	3/4-16	1-1/16-12	0.422	0.656	0.305	1.67	1.250
C6400-10-10-O	5/8	7/8-14	7/8-14	0.500	0.500	0.350	1.57	1.000
C6400-12-08-O	3/4 1/2	1-1/16-12	3/4-16	0.656	0.422	0.350	1.82	1.250
C6400-12-12-O	3/4	1-1/16-12	1-1/16-12	0.656	0.656	0.350	1.79	1.250
C6400-12-16-O	3/4 1	1-1/16-12	1-5/16-12	0.656	0.875	0.350	1.82	1.500
C6400-16-12-O	1-3/4	1-5/16-12	1-1/16-12	0.875	0.656	0.415	1.82	1.500
C6400-16-16-O	1	1-5/16-12	1-5/16-12	0.875	0.875	0.415	1.82	1.500
C6400-20-20-O	1-1/4	1-5/8-12	1-5/8-12	1.093	1.093	0.415	1.90	1.875
C6400-24-24-O	1-1/2	1-7/8-12	1-7/8-12	1.344	1.344	0.485	1.97	2.125
C6400-32-32-O	2	2-1/2-12	2-1/2-12	1.813	1.813	0.485	2.13	2.750



**HYDROMATIK**  
connections par excellence

## Flareless Bite Type Fittings

### BT-MORB Long | C6400-L-O Series



PART NO.SIZE	TUBE O.D.	B1 THREAD	B2 THREAD	B1 DRILL	B2 DRILL	K DEPTH	L LGTH	C HEX
C6400-L-04-04-O	1/4	7/16-20	7/16-20	0.203	0.203	0.234	2.02	0.562
C6400-L-06-06-O	3/8	9/16-18	9/16-18	0.281	0.281	0.250	2.23	0.688
C6400-L-08-08-O	1/2	3/4-16	3/4-16	0.422	0.422	0.305	2.62	0.875
C6400-L-10-10-O	5/8	7/8-14	7/8-14	0.500	0.500	0.350	2.98	1.000
C6400-L-12-12-O	3/4	1-1/16-12	1-1/16-12	0.656	0.656	0.350	3.53	1.250
C6400-L-16-16-O	1	1-5/16-12	1-5/16-12	0.875	0.875	0.415	3.91	1.500

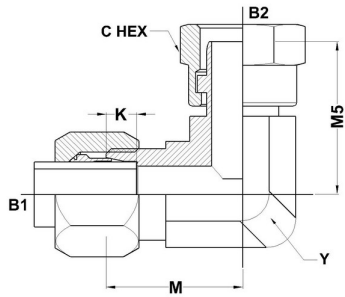


**HYDROMATIK**  
connections par excellence

## Flareless Bite Type Fittings

### BT-BTS 90° | C6500 Series

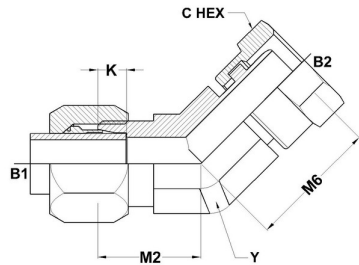
SAE # 080221 /MS# 51852



PART NO.SIZE	TUBE O.D.	B1 THREAD	B2 THREAD	B1 DRILL	B2 DRILL	K DEPTH	M LGTH	M5 LGTH	C HEX	Y FLATS
C6500-04-04-FG	1/4	7/16-20	7/16-20	0.203	0.203	0.234	0.89	1.05	0.562	0.438
C6500-06-06-FG	3/8	9/16-18	9/16-18	0.281	0.281	0.250	1.05	1.28	0.688	0.562
C6500-08-08-FG	1/2	3/4-16	3/4-16	0.422	0.422	0.305	1.25	1.47	0.875	0.750
C6500-10-10-FG	5/8	7/8-14	7/8-14	0.500	0.500	0.350	1.42	1.61	1.000	0.875
C6500-12-12-FG	3/4	1-1/16-12	1-1/16-12	0.656	0.656	0.350	1.58	1.77	1.250	1.062
C6500-16-16-FG	1	1-5/16-12	1-5/16-12	0.875	0.875	0.415	1.73	1.86	1.500	1.312
C6500-20-20-FG	1-1/4	1-5/8-12	1-5/8-12	1.093	1.093	0.415	1.89	2.08	2.000	1.625

## BT-BTS 45° | C6502 Series

SAE# 080321



PART NO.SIZE	TUBE O.D.	B1 THREAD	B2 THREAD	B1 DRILL	B2 DRILL	K DEPTH	M2 LGTH	M6 LGTH	C HEX	Y FLATS
C6502-04-04-F5	1/4	7/16-20	7/16-20	0.203	0.203	0.234	0.70	0.98	0.562	0.438
C6502-06-06-F5	3/8	9/16-18	9/16-18	0.281	0.281	0.25	0.83	1.20	0.688	0.562
C6502-08-08-F5	1/2	3/4-16	3/4-16	0.422	0.422	0.305	0.98	1.33	0.875	0.750
C6502-12-12-F5	3/4	1-1/16-12	1-1/16-12	0.656	0.656	0.35	1.27	1.61	1.250	1.062
C6502-16-16-F5	1	1-5/16-12	1-5/16-12	0.875	0.875	0.415	1.36	1.70	1.500	1.312
C6502-20-20-F5	1-1/4	1-5/8-12	1-5/8-12	1.093	1.093	0.415	1.45	1.80	2.000	1.625
C6502-24-24-F5	1-1/2	1-7/8-12	1-7/8-12	1.344	1.344	0.485	1.52	1.92	2.250	1.875

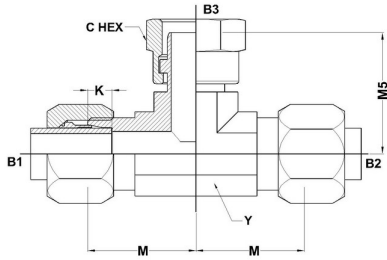


**HYDROMATIK**  
connections par excellence

## Flareless Bite Type Fittings

### BT-BT-BTS Tee | C6600 Series

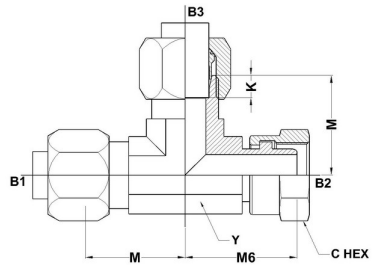
SAE# 080433 / MS# 51853



PART NO. SIZE	TUBE O.D.	B1 THREAD	B2 THREAD	B3 THREAD	B1 DRILL	B2 DRILL	B3 DRILL	K DEPTH	M LGTH	M5 LGTH	C HEX	Y FLATS
C6600-04-04-04-FG	1/4	7/16-20	7/16-20	7/16-20	0.203	0.203	0.203	0.234	0.89	1.05	0.562	0.438
C6600-06-06-06-FG	3/8	9/16-18	9/16-18	9/16-18	0.281	0.281	0.281	0.250	1.05	1.28	0.688	0.562
C6600-08-08-08-FG	1/2	3/4-16	3/4-16	3/4-16	0.422	0.422	0.422	0.305	1.25	1.47	0.875	0.750
C6600-12-12-12-FG	3/4	1-1/16-12	1-1/16-12	1-1/16-12	0.656	0.656	0.656	0.350	1.58	1.77	1.250	1.062

## BT-BTS-BT Tee | C6602 Series

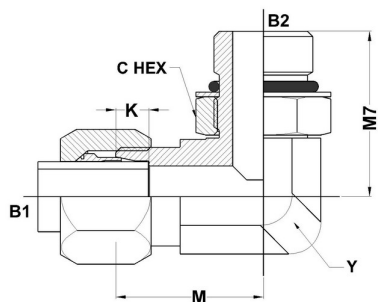
SAE# 080432 / MS# 51854



PART NO. SIZE	TUBE O.D.	B1 THREAD	B2 THREAD	B3 THREAD	B1 DRILL	B2 DRILL	B3 DRILL	K DEPTH	M LGTH	M6 LGTH	C HEX	Y FLATS
C6602-04-04-04-FG	1/4	7/16-20	7/16-20	7/16-20	0.203	0.203	0.203	0.234	0.89	1.05	0.562	0.438
C6602-06-06-06-FG	3/8	9/16-18	9/16-18	9/16-18	0.281	0.281	0.281	0.250	1.05	1.28	0.688	0.562
C6602-08-08-08-FG	1/2	3/4-16	3/4-16	3/4-16	0.422	0.422	0.422	0.305	1.25	1.47	0.875	0.750
C6602-12-12-12-FG	3/4	1-1/16-12	1-1/16-12	1-1/16-12	0.656	0.656	0.656	0.350	1.58	1.77	1.250	1.062
C6602-16-16-16-FG	1	1-5/16-12	1-5/16-12	1-5/16-12	0.875	0.875	0.875	0.415	1.73	1.86	1.500	1.312

## BT-MAORB 90° | C6801-NWO Series

SAE# 080220 / MS# 51539

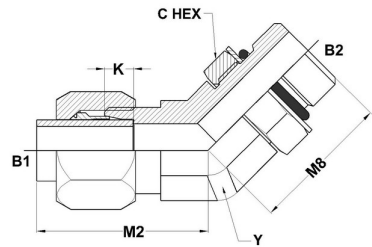


PART NO.SIZE	TUBE O.D.	B1 THREAD	B2 THREAD	B1 DRILL	B2 DRILL	K DEPTH	M LGTH	M7 LGTH	C HEX	Y FLATS
C6801-03-03-NWO-FG	3/16	3/8-24	3/8-24	0.125	0.125	0.234	0.83	0.94	0.500	0.438
C6801-04-04-NWO-FG	1/4	7/16-20	7/16-20	0.203	0.203	0.234	0.89	1.03	0.562	0.438
C6801-05-05-NWO-FG	5/16	1/2-20	1/2-20	0.234	0.234	0.250	0.95	1.13	0.625	0.562
C6801-06-04-NWO-FG	3/8	9/16-18	7/16-20	0.281	0.203	0.250	1.05	1.19	0.562	0.562
C6801-06-06-NWO-FG	3/8	9/16-18	9/16-18	0.281	0.281	0.250	1.05	1.25	0.688	0.562
C6801-06-08-NWO-FG	3/8	9/16-18	3/4-16	0.281	0.422	0.250	1.14	1.45	0.875	0.750
C6801-08-06-NWO-FG	1/2	3/4-16	9/16-18	0.422	0.281	0.305	1.25	1.32	0.688	0.750
C6801-08-08-NWO-FG	1/2	3/4-16	3/4-16	0.422	0.422	0.305	1.25	1.45	0.875	0.750
C6801-08-10-NWO-FG	1/2	3/4-16	7/8-14	0.422	0.500	0.305	1.35	1.70	1.000	0.875

C6801-08-12-NWO-FG	1/2	3/4-16	1-1/16-12	0.422	0.656	0.305	1.43	1.94	1.250	1.062
C6801-10-10-NWO-FG	5/8	7/8-14	7/8-14	0.500	0.500	0.350	1.42	1.70	1.000	0.875
C6801-12-08-NWO-FG	3/4	1-1/16-12	3/4-16	0.656	0.422	0.350	1.58	1.62	0.875	1.062
C6801-12-10-NWO-FG	3/4	1-1/16-12	7/8-14	0.656	0.500	0.350	1.58	1.78	1.000	1.062
C6801-12-12-NWO-FG	3/4	1-1/16-12	1-1/16-12	0.656	0.656	0.350	1.58	1.94	1.250	1.062
C6801-12-16-NWO-FG	3/4	1-1/16-12	1-5/16-12	0.656	0.875	0.350	1.73	2.05	1.500	1.312
C6801-16-12-NWO-FG	1	1-5/16-12	1-1/16-12	0.875	0.656	0.415	1.73	2.05	1.250	1.312
C6801-16-16-NWO-FG	1	1-5/16-12	1-5/16-12	0.875	0.875	0.415	1.73	2.05	1.500	1.312
C6801-20-20-NWO-FG	1-1/4	1-5/8-12	1-5/8-12	1.093	1.093	0.415	1.89	2.25	1.875	1.625
C6801-24-24-NWO-FG	1-1/2	1-7/8-12	1-7/8-12	1.344	1.344	0.485	2.02	2.39	2.125	1.875

## BT-MAORB 45° | C6802-NWO Series

SAE# 080320 / MS# 51842



PART NO.SIZE	TUBE O.D.	B1 THREAD	B2 THREAD	B1 DRILL	B2 DRILL	K DEPTH	M2 LGTH	M8 LGTH	C HEX	Y FLATS
C6802-04-04-NWO-FG	1/4	7/16-20	7/16-20	0.203	0.203	0.234	0.70	1.05	0.562	0.438
C6802-06-06-NWO-FG	3/8	9/16-18	9/16-18	0.281	0.281	0.250	0.83	1.14	0.688	0.562
C6802-08-08-NWO-FG	1/2	3/4-16	3/4-16	0.422	0.422	0.305	0.98	1.30	0.875	0.750
C6802-10-10-NWO-FG	5/8	7/8-14	7/8-14	0.500	0.500	0.350	1.08	1.52	1.000	0.875
C6802-12-12-NWO-FG	3/4	1-1/16-12	1-1/16-12	0.656	0.656	0.350	1.27	1.37	1.250	1.062
C6802-16-16-NWO-FG	1	1-5/16-12	1-5/16-12	0.875	0.875	0.415	1.36	1.86	1.500	1.312

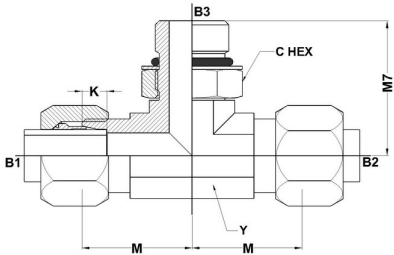


**HYDROMATIK**  
connections par excellence

## Flareless Bite Type Fittings

### BT-BT-MAORB Tee | C6803-NWO Series

SAE# 080429 / MS# 51841



PART NO.SIZE	TUBE O.D.	B1 THREAD	B2 THREAD	B3 THREAD	B1 DRILL	B2 DRILL	B3 DRILL	K DEPTH	M LGTH	M7 LGTH	C HEX	Y FLATS
C6803-04-04-04-NWO-FG	1/4	7/16-20	7/16-20	7/16-20	0.203	0.203	0.203	0.234	0.89	1.03	0.562	0.438
C6803-06-06-06-NWO-FG	3/8	9/16-18	9/16-18	9/16-18	0.281	0.281	0.281	0.250	1.05	1.25	0.688	0.562
C6803-08-08-08-NWO-FG	1/2	3/4-16	3/4-16	3/4-16	0.422	0.422	0.422	0.305	1.25	1.45	0.875	0.750
C6803-12-12-12-NWO-FG	3/4	1-1/16-12	1-1/16-12	1-1/16-12	0.656	0.656	0.656	0.350	1.58	1.94	1.250	1.062
C6803-16-16-16-NWO-FG	1	1-5/16-12	1-5/16-12	1-5/16-12	0.875	0.875	0.875	0.415	1.73	2.05	1.500	1.312

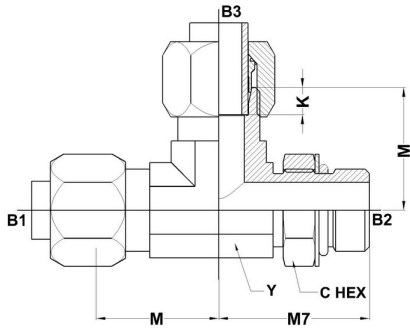


**HYDROMATIK**  
connections par excellence

## Flareless Bite Type Fittings

### BT-MAORB-BT Tee | C6804-NWO Series

SAE# 080428 / MS# 51892



PART NO. SIZE	TUBE O.D.	B1 THREAD	B2 THREAD	B3 THREAD	B1 DRILL	B2 DRILL	B3 DRILL	K DEPTH	M LGTH	M7 LGTH	C HEX	Y FLATS
C6804-04-04-04-NWO-FG	1/4	7/16-20	7/16-20	7/16-20	0.203	0.203	0.203	0.234	0.89	1.03	0.562	0.438
C6804-06-06-06-NWO-FG	3/8	9/16-18	9/16-18	9/16-18	0.281	0.281	0.281	0.250	1.05	1.25	0.688	0.562
C6804-08-08-08-NWO-FG	1/2	3/4-16	3/4-16	3/4-16	0.422	0.422	0.422	0.305	1.25	1.45	0.875	0.750
C6804-10-10-10-NWO-FG	5/8	7/8-14	7/8-14	7/8-14	0.500	0.500	0.500	0.350	1.42	1.70	1.000	0.875
C6804-12-12-12-NWO-FG	3/4	1-1/16-12	1-1/16-12	1-1/16-12	0.656	0.656	0.656	0.350	1.58	1.94	1.250	1.062
C6804-16-16-16-NWO-FG	1	1-5/16-12	1-5/16-12	1-5/16-12	0.875	0.875	0.875	0.415	1.73	2.05	1.500	1.312