

## Valves

### GAUGE ISOLATOR - Sub-Plate Mounting Valve GI-SPM |

#### Description

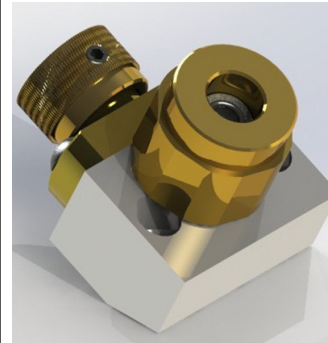
Seal type valve.

Swivelling gauge connection for easy gauge positioning.

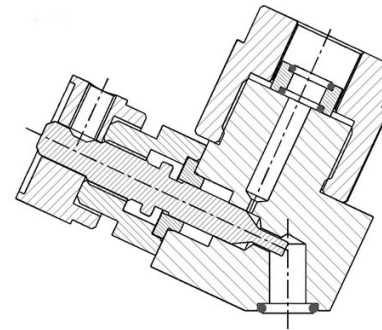
Compact assembly.

Eliminates gauge supporting bracket.

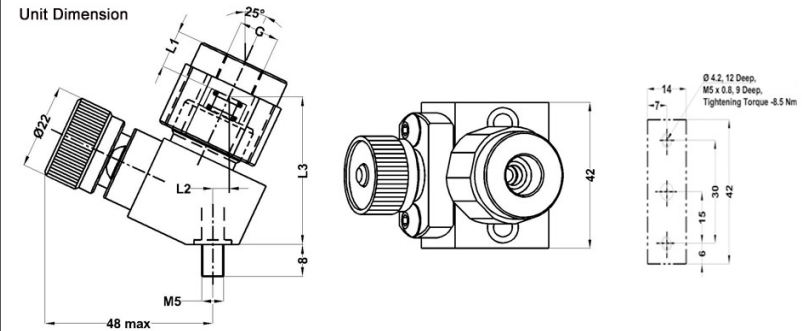
Angular gauge face plane in Sub- Plate mounting construction facilitating easy gauge reading.



Section



Unit Dimension



| Part#       | G    | L1   | L2  | L3   |
|-------------|------|------|-----|------|
| GI-SPM-G1/4 | G1/4 | 10.5 | 4.0 | 38.5 |
| GI-SPM-G3/8 | G3/8 | 10.5 | 4.0 | 39.0 |
| GI-SPM-G1/2 | G1/2 | 12.5 | 4.0 | 39.0 |

## Technical Specification

Construction ---- Seat type

Mounting ---- Sub-Plate mounting interface / Panel mounting

Interface Standard----Factory Standard.

Mounting Position ----Optional.

Operating Pressure----350 bar.

Hydraulic medium----Mineral oil.

Viscosity range----10 cSt to 380 cSt.

Fluid temperature range---- -20Â° C to +70Â° C.

Fluid cleanliness requirement ---- As per ISO 19/16 or better.

Mass----0.3 kg.