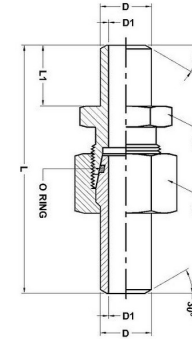
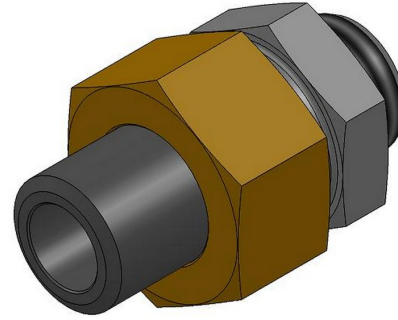




HYDROMATIK
connections par excellence

Weldable Type Fittings

ASK - WELD FITTINGS ASK |



Part No.	Max. Pressure PB	L	L1	D	D1	S1	S2
ASK 10 X 1.0	249	57	10	10	8	19	22
ASK 10 X 1.5	358	57	10	10	7	19	22
ASK 10 X 2.0	460	57	10	10	6	19	22
ASK 12 X 1.5	305	62	15	12	9	22	24
ASK 12 X 2.0	393	62	15	12	8	22	24
ASK 12 X 2.5	476	62	15	12	7	22	24
ASK 16 X 1.5	234	71.5	16.5	16	13	27	30
ASK 16 X 2.0	305	71.5	16.5	16	12	27	30
ASK 16 X 2.5	372	71.5	16.5	16	11	27	30
ASK 16 X 3.0	400	71.5	16.5	16	10	27	30
ASK 20 X 2.0	249	81	19	20	16	32	36
ASK 20 X 2.5	305	81	19	20	15	32	36
ASK 20 X 3.0	358	81	19	20	14	32	36
ASK 20 X 4.0	400	81	19	20	12	32	36

ASK 25 X 3.0	294	89	19.5	25	19	41	46
ASK 25 X 4.0	379	89	19.5	25	17	41	46
ASK 25 X 5.0	400	89	19.5	25	15	41	46
ASK 30 X 3.0	249	96.5	23	30	24	46	50
ASK 30 X 4.0	323	96.5	23	30	22	46	50
ASK 30 X 5.0	393	96.5	23	30	20	46	50
ASK 30 X 6.0	400	96.5	23	30	18	46	50
ASK 38 X 4.0	261	100.5	22	38	30	55	60
ASK 38 X 5.0	315	100.5	22	38	28	55	60
ASK 38 X 6.0	315	100.5	22	38	26	55	60
ASK 38 X 7.0	315	100.5	22	38	24	55	60

Dimensions given approx., fig. with tightened nut

Temp range without pressure reductions

for 'O' Ring sealing of NBR (buna N- Std) -35° to +100° C, FOR FPM

(Viton - ON request) -25° to +120° C.

Shore Hardness Approx. 90